



Market Code Schedule 14

Code Subsidiary Document No. 0201

Settlement Timetable & Reporting

Version: ~~1.2~~ 1.1

Status: Final

Date: ~~31/03/2009~~ 31/08/2007

~~Reference No~~ Document Ref: CSD0201

Change History

Version Number	Status	Date of Issue	Reason For Change	Change Control Reference	Sections Affected
1.0	Final	14/05/ 2007	N/A		
1.1	Final	31/08/ 2007	<u>Go live version</u>		
<u>1.2</u>		<u>31/03/2009</u>	<u>Baseline the format of the Aggregated Settlement Report</u>	<u>MCCP016</u>	<u>Section 2.5 & Appendix 2</u>
			<u>Formalise the use of the Disaggregated Settlement Report</u>	<u>MCCP024</u>	<u>Section 2.5</u>
			<u>Removal of nugatory obligations in CSD0201</u>	<u>MCCP025</u>	<u>Sections 2.3, 2.4.1, 3, 4 & Appendix 1</u>

Quality Assurance

Name	Responsibility	Signature	Date
Author:			
Alec Thompson			
Reviewer(s):			
Ken McRae			
Dan Lomax			
Jill Ashby			
Approved:			
Authorised:			

Table of Contents

1. Purpose and Scope	4
2. Settlement Timetable and Reporting Description	5
2.1 Provision of the Settlement Timetable for each Year	5
2.2 Provision of the Scottish Water Data	5
2.3 Deleted in Version 1.2	5
2.4 Settlement Run Types	5
2.5 Settlement Report Content	7
3. Process Diagrams	10
4. Interface and Timetable Requirements	12
Appendix 1: Example Settlement Timetable	13
Appendix 2: Aggregated Settlement Report	29
APP 2.1: Record Layout	29
APP 2.2: Header and Generic Data Items	32
APP 2.3: Water Volumetric Charges	33
APP 2.4: Water Non-Volumetric Charges	34
APP 2.5: Sewerage Volumetric Charges	35
APP 2.6: Sewerage Non-Volumetric Charges	36
APP 2.7: Trade Effluent Charges	37

1. Purpose and Scope

This document describes how the CMA will produce the Settlement Timetable and describes the content of the Settlement Reports that the CMA will produce in any Year.

2. Settlement Timetable and Reporting Description

2.1 Provision of the Settlement Timetable for each Year

The CMA will provide a Settlement Timetable to all Trading Parties and Scottish Water 30 Business Days prior to the first Settlement Run (P1) of each Year. This timetable will detail the calendar dates on which the CMA will issue the Settlement Reports to Trading Parties in any Year. The various Settlements Reports that the CMA will produce are described as P1, R1, R2, R3 and RF (which is further explained later in this document).

Appendix 1 contains an example Settlement Timetable for the Year 01/04/2008 to 31/03/2009.

2.2 Provision of the Scottish Water Data

Scottish Water will provide the CMA with the Scottish Water Data at least 20 Business Days prior to the first Settlement Run (P1) of any Year.

The CMA will make available the Scottish Water Data in order that all market participants can satisfy themselves as to its accuracy.

~~2.3 Deleted in Version 1.2 Estimated Weighted Average (EWA) Unit Rate Production~~

~~The CMA will produce the Estimated Weighted Average Unit Rate for each Supply Point, in accordance with CSD0205 (Charge Calculation, Allocation and Aggregation), 10 Business Days prior to the first Settlement Run (P1) of any Year.~~

2.4 Settlement Run Types

The CMA will calculate the relevant Wholesale Charges payable by each Licensed Provider in respect of each Settlement Day by performing the Settlement Runs. The CMA will perform four Settlement Runs for each Settlement Day: P1, R1, R2 and R3 and will perform the Tariff Year Settlement Run (RF) once for each Year. The CMA will report each of these Settlement Runs as follows:

- P1 – the preliminary Settlement Run(s), the Settlement Reports for which will be issued 16 Business Days before the Invoice Period in which the Settlement Day falls;

- R1 – the first Settlement Run(s), the Settlement Reports for which will be issued 2 Business Days after the end of the Invoice Period in which the Settlement Day falls;
- R2 – the second Settlement Run(s), the Settlement Reports for which will be issued 2 months after the end of the Invoice Period in which the Settlement Day falls;
- R3 – the third Settlement Run(s), the Settlement Reports for which will be issued 8 months after the end of the Invoice Period in which the Settlement Day falls; and
- RF – the, Tariff Year Settlement Run, the Settlement Reports for which will be issued 5 BD after the last third Settlement Run (R3) is reported for any Year.

2.4.1 Settlement Day Based Settlement Runs (P1, R1, R2 and R3)

The CMA will capture any changes to the Registration and Volume data of a Supply Point in each Settlement Run (P1, R1, R2 and R3) for a given Settlement Day. The report data generated by the CMA in respect of each Supply Point through each Settlement Run will therefore become progressively more accurate.

In Settlement Run P1, the CMA will calculate a forecast of the Wholesale Charges that will be payable by each Licensed Provider in respect of each Supply Point registered to it on the relevant Settlement Day.

The CMA's calculations during R1 Settlement Runs will factor in all data submitted to it relating to any changes to a Supply Point's SPID Data and/or Trading Data during the relevant Invoice Period.

The CMA's calculations during R2 Settlement Runs will factor in all new SPID Data and Trading Data submitted to it since Settlement Run R1 (particularly Meter Reads that are performed on a monthly basis).

The CMA's calculations during R3 Settlement Runs will factor in all new SPID Data and Trading Data submitted to it since Settlement Run R2 (particularly Meter Reads that are performed on a bi-annual basis).

~~The Estimated Weighted Average Unit Rate calculated for the Year will be applied to volumetric charges throughout these Settlement Runs.~~

The CMA may perform further ad hoc settlement runs, as required in accordance with the Market Code.

2.4.2 Tariff Year Settlement Run (RF)

The CMA will perform the RF Settlement Run 5 BD after reporting of the last R3 Settlement Run for any Year. The CMA's calculations during this Settlement Run will factor in the Actual Weighted Average Unit Rate for each Supply Point to calculate the Wholesale Charges that should have been payable by each Licensed Provider over the relevant Year for volumetric charges. Further detail on this process is provided in CSD0205 (Charge Calculation, Allocation and Aggregation).

2.5 Settlement Report Content

2.5.1 Settlement Day Based Settlement Report (P1, R1, R2 and R3)

A-The Settlement Report will provide comprise an aggregated Settlement Report (“the Aggregated Settlement Report”) and a disaggregated Settlement Report (“the Disaggregated Settlement Report”). The Aggregated Settlement Report will provide aggregated Settlement Day charges payable in each respective ~~each~~ Invoice Period. Each Aggregated Settlement Report will contain the following information:

- The Volume supplied by the Licensed Provider for each of the different volumetric Service Elements which it provided during the relevant Invoice Period;
- The volumetric charges payable by the Licensed Provider for each of the different volumetric Service Elements which it provided during the relevant Invoice Period;
- The total number of Settlement Days Registered for each of the different non-volumetric Service Elements which it provided during the relevant Invoice Period;
- The non-volumetric charges payable by the Licensed Provider for each of the different non-volumetric Service Elements which it provided during the relevant Invoice Period;
- The Volume supplied by the Licensed Provider for Trade Effluent Service to a Discharge Point which it provided during the relevant Invoice Period;
- The total number of Settlement Days Registered for Trade Effluent Service to a Discharge Point which it provided during the relevant Invoice Period; and
- The Trade Effluent Charge payable by the Licensed Provider for Trade Effluent Service to a Discharge Point which it provided during the relevant Invoice Period.;

The detail of the Aggregated Settlement Report is set out in Appendix 2.

The Disaggregated Settlement Report provides wholesale charging information at Service Element level. For each LP, the Disaggregated Settlement Report will contain the relevant information in respect of the SPIDs for which they are the registered LP. For Scottish Water, the Disaggregated Settlement Report will contain the relevant information in respect of every SPID, but the identity of the LP will be removed.

2.5.2 Tariff Year Settlement Report (RF)

The Settlement Report will provide aggregated Settlement Day charges payable in each respective Invoice Period. The RF Settlement Report will contain the following information:

- The Volume supplied by the Licensed Provider for each of the different volumetric Service Elements which it provided during the relevant Invoice Period;
- The volumetric charges payable by the Licensed Provider for each of the different volumetric Service Elements which it provided during the relevant Invoice Period;
- The total number of Settlement Days Registered for each of the different non-volumetric Service Elements which it provided during the relevant Invoice Period;
- The non-volumetric charges payable by the Licensed Provider for each of the different non-volumetric Service Elements which it provided during the relevant Invoice Period;
- The Volume supplied by the Licensed Provider for Trade Effluent Service to a Discharge Point which it provided during the relevant Invoice Period;
- The total number of Settlement Days Registered for Trade Effluent Service to a Discharge Point which it provided during the relevant Invoice Period; and
- The Trade Effluent Charge payable by the Licensed Provider for Trade Effluent Service to a Discharge Point which it provided during the relevant Invoice Period.

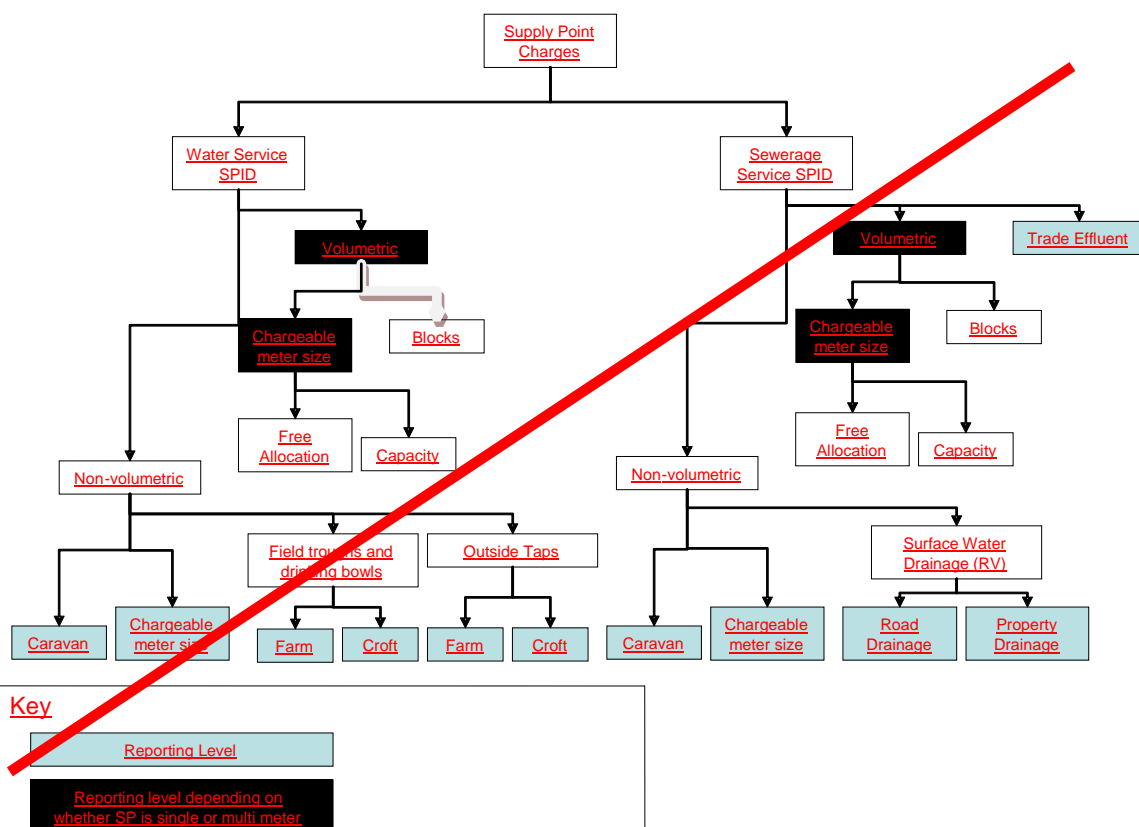
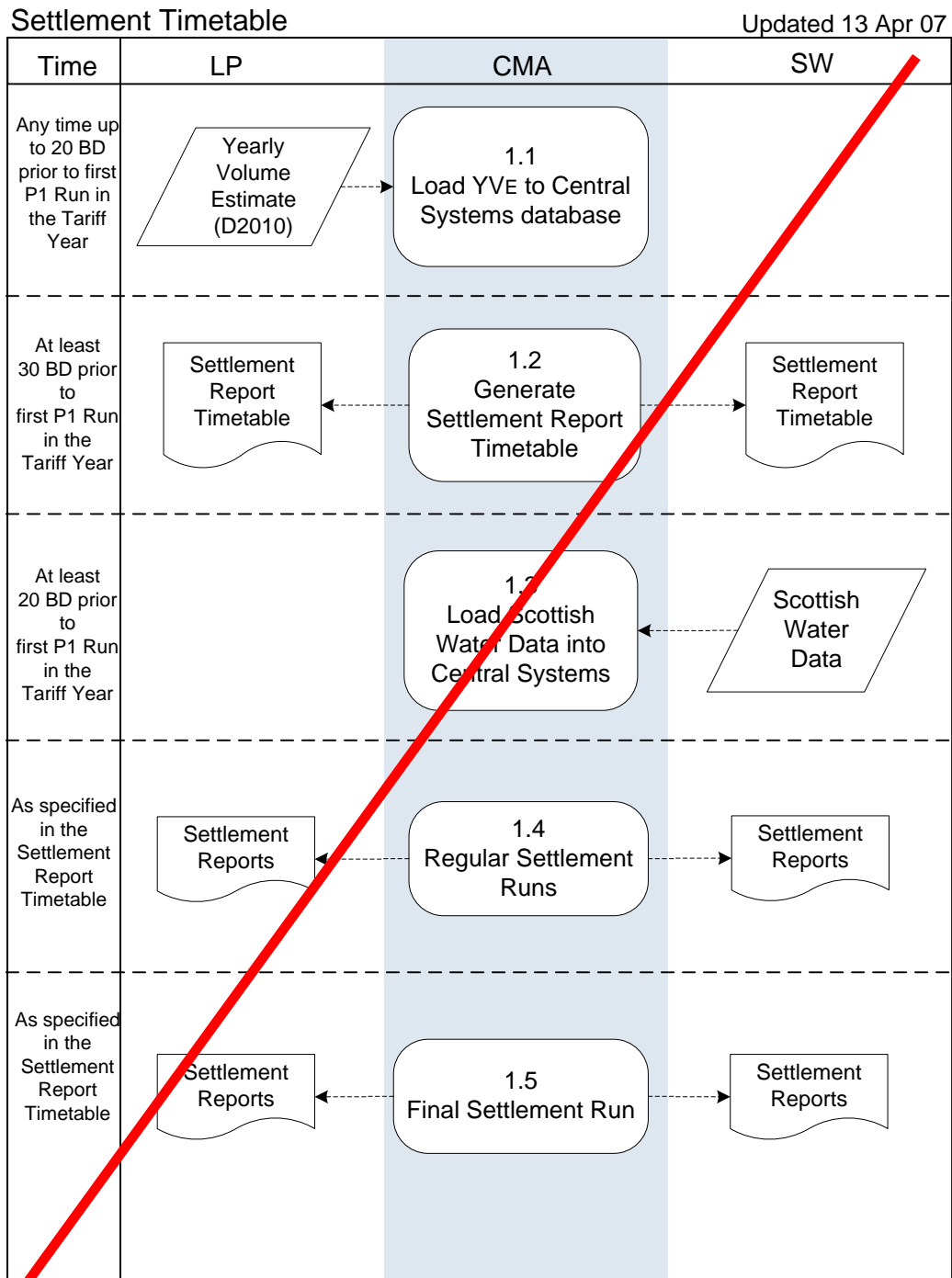


Figure 1. Service Element Charge breakdown structure.

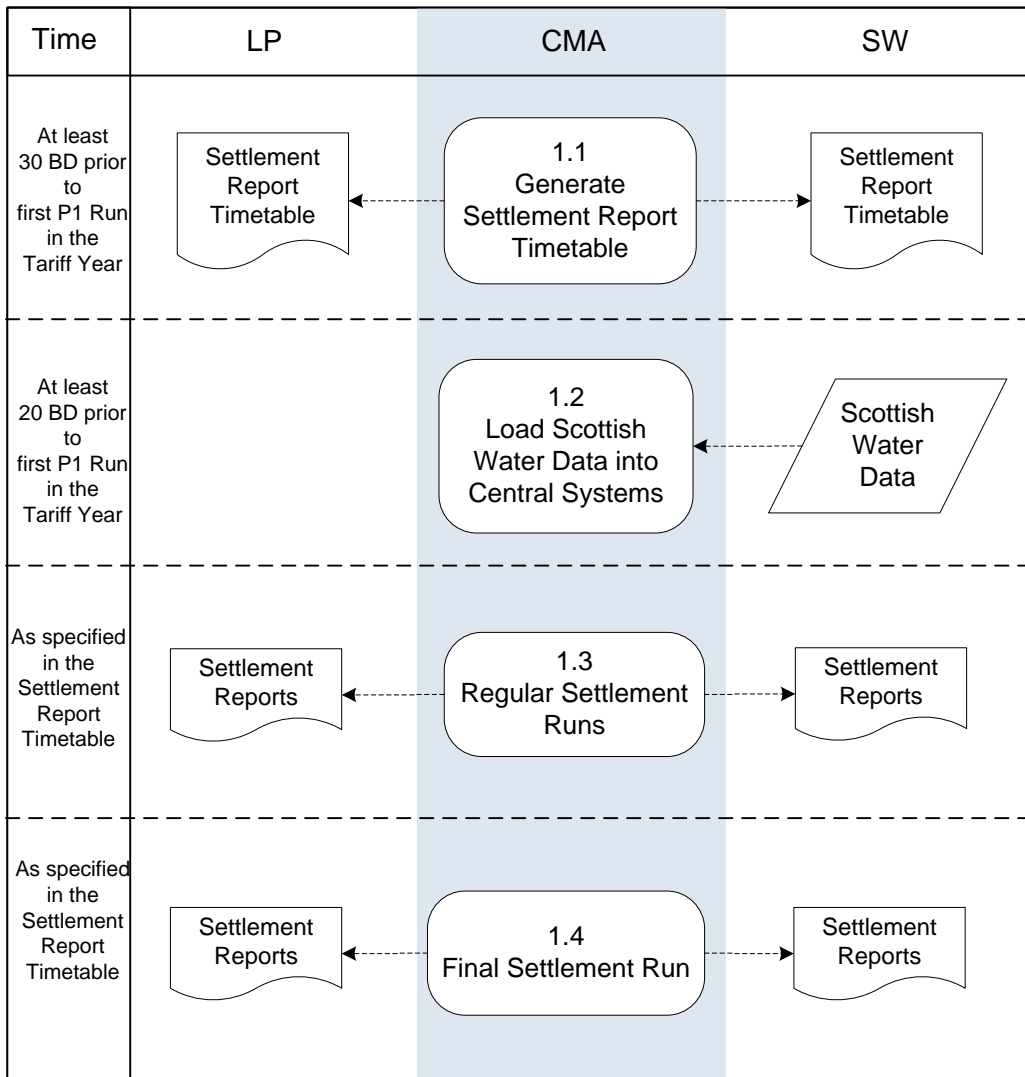
~~Figure 1 illustrates the various Service Elements in relation to which the CMA will show the Wholesale Charges payable by each Licensed Provider in the Settlement Reports.~~

3. Process Diagrams



NOTE:

- The first row that indicated the LP Yve activity has been deleted from this diagram; see replacement below.



4. Interface and Timetable Requirements

Step Ref	When	Requirement	From	To	Information	Method
1.1	Any time up to 20 Business Days prior to Settlement Run P1 in the relevant Year	Licensed Provider may forecast the Estimated Yearly Volume	LP	CMA	The forecast of the Estimated Yearly Volume is part of the ad hoc SPID update process.	
1.1 4.2	At least 30 Business Days prior to Settlement Run P1 run for the relevant Year	Provide Settlement Reports Timetable to all Licensed Providers and SW	CMA	LPs; SW	Settlement Reports Timetable for all Settlement Reports to be provided in the forthcoming Year.	
1.2 4.3	At least 20 Business Days before Settlement Run P1 of the relevant Year	Scottish Water to provide the Scottish Water Data to the CMA for the relevant Year	SW	CMA	Scottish Water Data provided and made available to the Licensed Providers.	
1.3 4.4	As specified in the Settlement Reports Timetable.	Regular Settlement Runs. P1 – Preliminary R1 – Run 1 R2 – Run 2 R3 – Run 3	CMA	SW; LPs	Settlement Reports	
1.4 4.5	As specified in the Settlement Reports Timetable.	RF Settlement Run	CMA	SW, LPs	Settlement Reports	

Appendix 1:— Example Settlement Timetable

The following timetable has been created assuming the ongoing position, with the Financial Year running from 01/04/08 to 31/03/09 and Invoice Periods being calendar months.

Settlement Type	
P1	Preliminary Run (reported each Invoice Period, Monthly) 16 BD prior to the start of the month
R1	Run 1, reported monthly 2 BD after the end of the Invoice Month
R2	Run 2, reported monthly 2 months after Run 1 for the Invoice Month
R3	Run 3 reported monthly 6 months after Run 2 for the Invoice Month
RF	Final Run, Reported 5 Business Days after the last R3 Report for the Tariff Year (run once each Year)

date	day	Event / Settlement Report
01/01/2008	Tuesday	New Years Day
02/01/2008	Wednesday	2nd January
03/01/2008	Thursday	
04/01/2008	Friday	
05/01/2008	Saturday	
06/01/2008	Sunday	
07/01/2008	Monday	
08/01/2008	Tuesday	
09/01/2008	Wednesday	
10/01/2008	Thursday	
11/01/2008	Friday	
12/01/2008	Saturday	
13/01/2008	Sunday	
14/01/2008	Monday	
15/01/2008	Tuesday	
16/01/2008	Wednesday	
17/01/2008	Thursday	
18/01/2008	Friday	
19/01/2008	Saturday	
20/01/2008	Sunday	
21/01/2008	Monday	
22/01/2008	Tuesday	
23/01/2008	Wednesday	
24/01/2008	Thursday	
25/01/2008	Friday	
26/01/2008	Saturday	
27/01/2008	Sunday	
28/01/2008	Monday	CMA to issue Settlement Timetable Calendar for 2008/9 to SW and all Licensed Providers
29/01/2008	Tuesday	
30/01/2008	Wednesday	
31/01/2008	Thursday	
01/02/2008	Friday	
02/02/2008	Saturday	
03/02/2008	Sunday	

04/02/2008	Monday	
05/02/2008	Tuesday	
06/02/2008	Wednesday	
07/02/2008	Thursday	
08/02/2008	Friday	
09/02/2008	Saturday	
10/02/2008	Sunday	
11/02/2008	Monday	Scottish Water Data Applicable to the Year 2008/9 last day for delivery from SW to CMA
12/02/2008	Tuesday	
13/02/2008	Wednesday	
14/02/2008	Thursday	
15/02/2008	Friday	
16/02/2008	Saturday	
17/02/2008	Sunday	
18/02/2008	Monday	
19/02/2008	Tuesday	
20/02/2008	Wednesday	
21/02/2008	Thursday	
22/02/2008	Friday	
23/02/2008	Saturday	
24/02/2008	Sunday	
25/02/2008	Monday	GMA produce EWA Unit Rates for Supply Points for the Year ahead
26/02/2008	Tuesday	
27/02/2008	Wednesday	
28/02/2008	Thursday	
29/02/2008	Friday	
01/03/2008	Saturday	
02/03/2008	Sunday	
03/03/2008	Monday	
04/03/2008	Tuesday	
05/03/2008	Wednesday	
06/03/2008	Thursday	
07/03/2008	Friday	
08/03/2008	Saturday	
09/03/2008	Sunday	
10/03/2008	Monday	P1 run for April 2008 - 16 BD before start of the Invoice Period
11/03/2008	Tuesday	
12/03/2008	Wednesday	
13/03/2008	Thursday	
14/03/2008	Friday	
15/03/2008	Saturday	
16/03/2008	Sunday	
17/03/2008	Monday	
18/03/2008	Tuesday	
19/03/2008	Wednesday	
20/03/2008	Thursday	
21/03/2008	Friday	Good Friday
22/03/2008	Saturday	
23/03/2008	Sunday	
24/03/2008	Monday	Easter Monday

25/03/2008	Tuesday	
26/03/2008	Wednesday	
27/03/2008	Thursday	
28/03/2008	Friday	
29/03/2008	Saturday	
30/03/2008	Sunday	
31/03/2008	Monday	
01/04/2008	Tuesday	Start of Year 2008/9
02/04/2008	Wednesday	
03/04/2008	Thursday	
04/04/2008	Friday	
05/04/2008	Saturday	
06/04/2008	Sunday	
07/04/2008	Monday	
08/04/2008	Tuesday	
09/04/2008	Wednesday	P1 run for May 2008 - 16 BD before start of the Invoice Period
10/04/2008	Thursday	
11/04/2008	Friday	
12/04/2008	Saturday	
13/04/2008	Sunday	
14/04/2008	Monday	
15/04/2008	Tuesday	
16/04/2008	Wednesday	
17/04/2008	Thursday	
18/04/2008	Friday	
19/04/2008	Saturday	
20/04/2008	Sunday	
21/04/2008	Monday	
22/04/2008	Tuesday	
23/04/2008	Wednesday	
24/04/2008	Thursday	
25/04/2008	Friday	
26/04/2008	Saturday	
27/04/2008	Sunday	
28/04/2008	Monday	
29/04/2008	Tuesday	
30/04/2008	Wednesday	
01/05/2008	Thursday	
02/05/2008	Friday	R1 run for April 2008 - 2 BD after end of the Invoice Period
03/05/2008	Saturday	
04/05/2008	Sunday	
05/05/2008	Monday	Early May Bank Holiday
06/05/2008	Tuesday	
07/05/2008	Wednesday	
08/05/2008	Thursday	P1 run for June 2008 - 16 BD before start of the Invoice Period
09/05/2008	Friday	
10/05/2008	Saturday	
11/05/2008	Sunday	
12/05/2008	Monday	
13/05/2008	Tuesday	
14/05/2008	Wednesday	

15/05/2008	Thursday	
16/05/2008	Friday	
17/05/2008	Saturday	
18/05/2008	Sunday	
19/05/2008	Monday	
20/05/2008	Tuesday	
21/05/2008	Wednesday	
22/05/2008	Thursday	
23/05/2008	Friday	
24/05/2008	Saturday	
25/05/2008	Sunday	
26/05/2008	Monday	Spring Bank Holiday
27/05/2008	Tuesday	
28/05/2008	Wednesday	
29/05/2008	Thursday	
30/05/2008	Friday	
31/05/2008	Saturday	
01/06/2008	Sunday	
02/06/2008	Monday	
03/06/2008	Tuesday	R1 run for May 2008 - 2 BD after end of the Invoice Period
04/06/2008	Wednesday	
05/06/2008	Thursday	
06/06/2008	Friday	
07/06/2008	Saturday	
08/06/2008	Sunday	
09/06/2008	Monday	P1 run for July 2008 - 16 BD before start of the Invoice Period
10/06/2008	Tuesday	
11/06/2008	Wednesday	
12/06/2008	Thursday	
13/06/2008	Friday	
14/06/2008	Saturday	
15/06/2008	Sunday	
16/06/2008	Monday	
17/06/2008	Tuesday	
18/06/2008	Wednesday	
19/06/2008	Thursday	
20/06/2008	Friday	
21/06/2008	Saturday	
22/06/2008	Sunday	
23/06/2008	Monday	
24/06/2008	Tuesday	
25/06/2008	Wednesday	
26/06/2008	Thursday	
27/06/2008	Friday	
28/06/2008	Saturday	
29/06/2008	Sunday	
30/06/2008	Monday	
01/07/2008	Tuesday	
02/07/2008	Wednesday	R1 run for June 2008 - 2 BD after end of the Invoice Period R2 run for April 2008 - 2 Months after R1
03/07/2008	Thursday	
04/07/2008	Friday	

05/07/2008	Saturday	
06/07/2008	Sunday	
07/07/2008	Monday	
08/07/2008	Tuesday	
09/07/2008	Wednesday	
10/07/2008	Thursday	P1 run for August 2008 - 16 BD before start of the Invoice Period
11/07/2008	Friday	
12/07/2008	Saturday	
13/07/2008	Sunday	
14/07/2008	Monday	
15/07/2008	Tuesday	
16/07/2008	Wednesday	
17/07/2008	Thursday	
18/07/2008	Friday	
19/07/2008	Saturday	
20/07/2008	Sunday	
21/07/2008	Monday	
22/07/2008	Tuesday	
23/07/2008	Wednesday	
24/07/2008	Thursday	
25/07/2008	Friday	
26/07/2008	Saturday	
27/07/2008	Sunday	
28/07/2008	Monday	
29/07/2008	Tuesday	
30/07/2008	Wednesday	
31/07/2008	Thursday	
01/08/2008	Friday	
02/08/2008	Saturday	
03/08/2008	Sunday	
04/08/2008	Monday	Summer Bank Holiday
05/08/2008	Tuesday	R1 run for July 2008 - 2 BD after end of the Invoice Period
06/08/2008	Wednesday	R2 run for May 2008 - 2 Months after R1
07/08/2008	Thursday	
08/08/2008	Friday	P1 run for September 2008 - 16 BD before start of the Invoice Period
09/08/2008	Saturday	
10/08/2008	Sunday	
11/08/2008	Monday	
12/08/2008	Tuesday	
13/08/2008	Wednesday	
14/08/2008	Thursday	
15/08/2008	Friday	
16/08/2008	Saturday	
17/08/2008	Sunday	
18/08/2008	Monday	
19/08/2008	Tuesday	
20/08/2008	Wednesday	
21/08/2008	Thursday	
22/08/2008	Friday	

23/08/2008	Saturday	
24/08/2008	Sunday	
25/08/2008	Monday	
26/08/2008	Tuesday	
27/08/2008	Wednesday	
28/08/2008	Thursday	
29/08/2008	Friday	
30/08/2008	Saturday	
31/08/2008	Sunday	
01/09/2008	Monday	
02/09/2008	Tuesday	R1 run for August 2008 - 2 BD after end of the Invoice Period R2 run for June 2008 - 2 Months after R1
03/09/2008	Wednesday	
04/09/2008	Thursday	
05/09/2008	Friday	
06/09/2008	Saturday	
07/09/2008	Sunday	
08/09/2008	Monday	
09/09/2008	Tuesday	P1 run for October 2008 - 16 BD before start of the Invoice Period
10/09/2008	Wednesday	
11/09/2008	Thursday	
12/09/2008	Friday	
13/09/2008	Saturday	
14/09/2008	Sunday	
15/09/2008	Monday	
16/09/2008	Tuesday	
17/09/2008	Wednesday	
18/09/2008	Thursday	
19/09/2008	Friday	
20/09/2008	Saturday	
21/09/2008	Sunday	
22/09/2008	Monday	
23/09/2008	Tuesday	
24/09/2008	Wednesday	
25/09/2008	Thursday	
26/09/2008	Friday	
27/09/2008	Saturday	
28/09/2008	Sunday	
29/09/2008	Monday	
30/09/2008	Tuesday	
01/10/2008	Wednesday	
02/10/2008	Thursday	R1 run for September 2008 - 2 BD after end of the Invoice Period
03/10/2008	Friday	
04/10/2008	Saturday	
05/10/2008	Sunday	
06/10/2008	Monday	R2 run for July 2008 - 2 Months after R1
07/10/2008	Tuesday	
08/10/2008	Wednesday	
09/10/2008	Thursday	

10/10/2008	Friday	P1 run for November 2008 - 16 BD before start of the Invoice Period
11/10/2008	Saturday	
12/10/2008	Sunday	
13/10/2008	Monday	
14/10/2008	Tuesday	
15/10/2008	Wednesday	
16/10/2008	Thursday	
17/10/2008	Friday	
18/10/2008	Saturday	
19/10/2008	Sunday	
20/10/2008	Monday	
21/10/2008	Tuesday	
22/10/2008	Wednesday	
23/10/2008	Thursday	
24/10/2008	Friday	
25/10/2008	Saturday	
26/10/2008	Sunday	
27/10/2008	Monday	
28/10/2008	Tuesday	
29/10/2008	Wednesday	
30/10/2008	Thursday	
31/10/2008	Friday	
01/11/2008	Saturday	
02/11/2008	Sunday	
03/11/2008	Monday	
04/11/2008	Tuesday	R1 run for October 2008 - 2 BD after end of the Invoice Period
05/11/2008	Wednesday	R2 run for August 2008 - 2 Months after R1
06/11/2008	Thursday	
07/11/2008	Friday	P1 run for December 2008 - 16 BD before start of the Invoice Period
08/11/2008	Saturday	
09/11/2008	Sunday	
10/11/2008	Monday	
11/11/2008	Tuesday	
12/11/2008	Wednesday	
13/11/2008	Thursday	
14/11/2008	Friday	
15/11/2008	Saturday	
16/11/2008	Sunday	
17/11/2008	Monday	
18/11/2008	Tuesday	
19/11/2008	Wednesday	
20/11/2008	Thursday	
21/11/2008	Friday	
22/11/2008	Saturday	
23/11/2008	Sunday	
24/11/2008	Monday	
25/11/2008	Tuesday	
26/11/2008	Wednesday	
27/11/2008	Thursday	
28/11/2008	Friday	

29/11/2008	Saturday	
30/11/2008	Sunday	
01/12/2008	Monday	
02/12/2008	Tuesday	R1 run for November 2008 - 2 BD after end of the Invoice Period
		R2 run for September 2008 - 2 Months after R1
03/12/2008	Wednesday	
04/12/2008	Thursday	
05/12/2008	Friday	
06/12/2008	Saturday	
07/12/2008	Sunday	
08/12/2008	Monday	P1 run for January 2009 - 16 BD before start of the Invoice Period
09/12/2008	Tuesday	
10/12/2008	Wednesday	
11/12/2008	Thursday	
12/12/2008	Friday	
13/12/2008	Saturday	
14/12/2008	Sunday	
15/12/2008	Monday	
16/12/2008	Tuesday	
17/12/2008	Wednesday	
18/12/2008	Thursday	
19/12/2008	Friday	
20/12/2008	Saturday	
21/12/2008	Sunday	
22/12/2008	Monday	
23/12/2008	Tuesday	
24/12/2008	Wednesday	
25/12/2008	Thursday	Christmas Day
26/12/2008	Friday	Boxing Day
27/12/2008	Saturday	
28/12/2008	Sunday	
29/12/2008	Monday	
30/12/2008	Tuesday	
31/12/2008	Wednesday	
01/01/2009	Thursday	New Years Day
02/01/2009	Friday	2nd January
03/01/2009	Saturday	
04/01/2009	Sunday	
05/01/2009	Monday	R3 run for April 2008 - 6 Months after R2
06/01/2009	Tuesday	R1 run for December 2008 - 2 BD after end of the Invoice Period
		R2 run for October 2008 - 2 Months after R1
07/01/2009	Wednesday	
08/01/2009	Thursday	
09/01/2009	Friday	P1 run for February 2009 - 16 BD before start of the Invoice Period
10/01/2009	Saturday	
11/01/2009	Sunday	
12/01/2009	Monday	
13/01/2009	Tuesday	
14/01/2009	Wednesday	

15/01/2009	Thursday	
16/01/2009	Friday	
17/01/2009	Saturday	
18/01/2009	Sunday	
19/01/2009	Monday	
20/01/2009	Tuesday	
21/01/2009	Wednesday	
22/01/2009	Thursday	
23/01/2009	Friday	
24/01/2009	Saturday	
25/01/2009	Sunday	
26/01/2009	Monday	
27/01/2009	Tuesday	CMA to issue Settlement Timetable Calendar for 2009/10 to SW and all Licensed Providers
28/01/2009	Wednesday	
29/01/2009	Thursday	
30/01/2009	Friday	
31/01/2009	Saturday	
01/02/2009	Sunday	
02/02/2009	Monday	R2 run for November 2008 - 2 Months after R1
03/02/2009	Tuesday	R1 run for January 2009 - 2 BD after end of the Invoice Period
04/02/2009	Wednesday	
05/02/2009	Thursday	
06/02/2009	Friday	R3 run for May 2008 - 6 Months after R2
		P1 run for March 2009 - 16 BD before start of the Invoice Period
07/02/2009	Saturday	
08/02/2009	Sunday	
09/02/2009	Monday	
10/02/2009	Tuesday	Scottish Water Data Applicable to Tariff Year 2009/10 last day for delivery from SW to CMA
		EWA run for Tariff Year 01/04/2009 – 31/03/2010
11/02/2009	Wednesday	
12/02/2009	Thursday	
13/02/2009	Friday	
14/02/2009	Saturday	
15/02/2009	Sunday	
16/02/2009	Monday	
17/02/2009	Tuesday	
18/02/2009	Wednesday	
19/02/2009	Thursday	
20/02/2009	Friday	
21/02/2009	Saturday	
22/02/2009	Sunday	
23/02/2009	Monday	
24/02/2009	Tuesday	
25/02/2009	Wednesday	
26/02/2009	Thursday	
27/02/2009	Friday	
28/02/2009	Saturday	
01/03/2009	Sunday	
02/03/2009	Monday	R3 run for June 2008 - 6 Months after R2

03/03/2009	Tuesday	R1 run for February 2009 - 2 BD after end of the Invoice Period
04/03/2009	Wednesday	
05/03/2009	Thursday	
06/03/2009	Friday	R2 run for December 2008 - 2 Months after R1
07/03/2009	Saturday	
08/03/2009	Sunday	
09/03/2009	Monday	
10/03/2009	Tuesday	P1 run for April 2009 - 16 BD before start of the Invoice Period
11/03/2009	Wednesday	
12/03/2009	Thursday	
13/03/2009	Friday	
14/03/2009	Saturday	
15/03/2009	Sunday	
16/03/2009	Monday	
17/03/2009	Tuesday	
18/03/2009	Wednesday	
19/03/2009	Thursday	
20/03/2009	Friday	
21/03/2009	Saturday	
22/03/2009	Sunday	
23/03/2009	Monday	
24/03/2009	Tuesday	
25/03/2009	Wednesday	
26/03/2009	Thursday	
27/03/2009	Friday	
28/03/2009	Saturday	
29/03/2009	Sunday	
30/03/2009	Monday	
31/03/2009	Tuesday	
01/04/2009	Wednesday	
02/04/2009	Thursday	R1 run for March 2009 - 2 BD after end of the Invoice Period
03/04/2009	Friday	R2 run for January 2009 - 2 Months after R1
04/04/2009	Saturday	
05/04/2009	Sunday	
06/04/2009	Monday	R3 run for July 2008 - 6 Months after R2
07/04/2009	Tuesday	
08/04/2009	Wednesday	P1 run for May 2009 - 16 BD before start of the Invoice Period
09/04/2009	Thursday	
10/04/2009	Friday	Good Friday
11/04/2009	Saturday	
12/04/2009	Sunday	
13/04/2009	Monday	Easter Monday
14/04/2009	Tuesday	
15/04/2009	Wednesday	
16/04/2009	Thursday	
17/04/2009	Friday	
18/04/2009	Saturday	
19/04/2009	Sunday	
20/04/2009	Monday	

21/04/2009	Tuesday	
22/04/2009	Wednesday	
23/04/2009	Thursday	
24/04/2009	Friday	
25/04/2009	Saturday	
26/04/2009	Sunday	
27/04/2009	Monday	
28/04/2009	Tuesday	
29/04/2009	Wednesday	
30/04/2009	Thursday	
01/05/2009	Friday	
02/05/2009	Saturday	
03/05/2009	Sunday	
04/05/2009	Monday	Early May Bank Holiday
05/05/2009	Tuesday	R3 run for August 2008 - 6 Months after R2
		R1 run for April 2009 - 2 BD after end of the Invoice Period
		R2 run for February 2009 - 2 Months after R1
06/05/2009	Wednesday	
07/05/2009	Thursday	P1 run for June 2009 - 16 BD before start of the Invoice Period
08/05/2009	Friday	
09/05/2009	Saturday	
10/05/2009	Sunday	
11/05/2009	Monday	
12/05/2009	Tuesday	
13/05/2009	Wednesday	
14/05/2009	Thursday	
15/05/2009	Friday	
16/05/2009	Saturday	
17/05/2009	Sunday	
18/05/2009	Monday	
19/05/2009	Tuesday	
20/05/2009	Wednesday	
21/05/2009	Thursday	
22/05/2009	Friday	
23/05/2009	Saturday	
24/05/2009	Sunday	
25/05/2009	Monday	Spring Bank Holiday
26/05/2009	Tuesday	
27/05/2009	Wednesday	
28/05/2009	Thursday	
29/05/2009	Friday	
30/05/2009	Saturday	
31/05/2009	Sunday	
01/06/2009	Monday	
02/06/2009	Tuesday	R3 run for September 2008 - 6 Months after R2
		R1 run for May 2009 - 2 BD after end of the Invoice Period
		R2 run for March 2009 - 2 Months after R1
03/06/2009	Wednesday	
04/06/2009	Thursday	
05/06/2009	Friday	
06/06/2009	Saturday	

07/06/2009	Sunday	
08/06/2009	Monday	
09/06/2009	Tuesday	P1 run for July 2009 - 16 BD before start of the Invoice Period
10/06/2009	Wednesday	
11/06/2009	Thursday	
12/06/2009	Friday	
13/06/2009	Saturday	
14/06/2009	Sunday	
15/06/2009	Monday	
16/06/2009	Tuesday	
17/06/2009	Wednesday	
18/06/2009	Thursday	
19/06/2009	Friday	
20/06/2009	Saturday	
21/06/2009	Sunday	
22/06/2009	Monday	
23/06/2009	Tuesday	
24/06/2009	Wednesday	
25/06/2009	Thursday	
26/06/2009	Friday	
27/06/2009	Saturday	
28/06/2009	Sunday	
29/06/2009	Monday	
30/06/2009	Tuesday	
01/07/2009	Wednesday	
02/07/2009	Thursday	R1 run for June 2009 - 2 BD after end of the Invoice Period
03/07/2009	Friday	
04/07/2009	Saturday	
05/07/2009	Sunday	
06/07/2009	Monday	R2 run for April 2009 - 2 Months after R1
07/07/2009	Tuesday	R3 run for October 2008 - 6 Months after R2
08/07/2009	Wednesday	
09/07/2009	Thursday	
10/07/2009	Friday	P1 run for August 2009 - 16 BD before start of the Invoice Period
11/07/2009	Saturday	
12/07/2009	Sunday	
13/07/2009	Monday	
14/07/2009	Tuesday	
15/07/2009	Wednesday	
16/07/2009	Thursday	
17/07/2009	Friday	
18/07/2009	Saturday	
19/07/2009	Sunday	
20/07/2009	Monday	
21/07/2009	Tuesday	
22/07/2009	Wednesday	
23/07/2009	Thursday	
24/07/2009	Friday	
25/07/2009	Saturday	
26/07/2009	Sunday	
27/07/2009	Monday	

28/07/2009	Tuesday	
29/07/2009	Wednesday	
30/07/2009	Thursday	
31/07/2009	Friday	
01/08/2009	Saturday	
02/08/2009	Sunday	
03/08/2009	Monday	Summer Bank Holiday
04/08/2009	Tuesday	R3 run for November 2008 - 6 Months after R2 R2 run for May 2009 - 2 Months after R1
05/08/2009	Wednesday	R1 run for July 2009 - 2 BD after end of the Invoice Period
06/08/2009	Thursday	
07/08/2009	Friday	
08/08/2009	Saturday	
09/08/2009	Sunday	
10/08/2009	Monday	P1 run for September 2009 - 16 BD before start of the Invoice Period
11/08/2009	Tuesday	
12/08/2009	Wednesday	
13/08/2009	Thursday	
14/08/2009	Friday	
15/08/2009	Saturday	
16/08/2009	Sunday	
17/08/2009	Monday	
18/08/2009	Tuesday	
19/08/2009	Wednesday	
20/08/2009	Thursday	
21/08/2009	Friday	
22/08/2009	Saturday	
23/08/2009	Sunday	
24/08/2009	Monday	
25/08/2009	Tuesday	
26/08/2009	Wednesday	
27/08/2009	Thursday	
28/08/2009	Friday	
29/08/2009	Saturday	
30/08/2009	Sunday	
31/08/2009	Monday	
01/09/2009	Tuesday	
02/09/2009	Wednesday	R1 run for August 2009 - 2 BD after end of the Invoice Period R2 run for June 2009 - 2 Months after R1
03/09/2009	Thursday	
04/09/2009	Friday	
05/09/2009	Saturday	
06/09/2009	Sunday	
07/09/2009	Monday	R3 run for December 2008 - 6 Months after R2
08/09/2009	Tuesday	
09/09/2009	Wednesday	P1 run for October 2009 - 16 BD before start of the Invoice Period
10/09/2009	Thursday	
11/09/2009	Friday	
12/09/2009	Saturday	
13/09/2009	Sunday	

14/09/2009	Monday	
15/09/2009	Tuesday	
16/09/2009	Wednesday	
17/09/2009	Thursday	
18/09/2009	Friday	
19/09/2009	Saturday	
20/09/2009	Sunday	
21/09/2009	Monday	
22/09/2009	Tuesday	
23/09/2009	Wednesday	
24/09/2009	Thursday	
25/09/2009	Friday	
26/09/2009	Saturday	
27/09/2009	Sunday	
28/09/2009	Monday	
29/09/2009	Tuesday	
30/09/2009	Wednesday	
01/10/2009	Thursday	
02/10/2009	Friday	R1 run for September 2009 - 2 BD after end of the Invoice Period
03/10/2009	Saturday	
04/10/2009	Sunday	
05/10/2009	Monday	R2 run for July 2009 - 2 Months after R1
06/10/2009	Tuesday	R3 run for January 2009 - 6 Months after R2
07/10/2009	Wednesday	
08/10/2009	Thursday	
09/10/2009	Friday	P1 run for November 2009 - 16 BD before start of the Invoice Period
10/10/2009	Saturday	
11/10/2009	Sunday	
12/10/2009	Monday	
13/10/2009	Tuesday	
14/10/2009	Wednesday	
15/10/2009	Thursday	
16/10/2009	Friday	
17/10/2009	Saturday	
18/10/2009	Sunday	
19/10/2009	Monday	
20/10/2009	Tuesday	
21/10/2009	Wednesday	
22/10/2009	Thursday	
23/10/2009	Friday	
24/10/2009	Saturday	
25/10/2009	Sunday	
26/10/2009	Monday	
27/10/2009	Tuesday	
28/10/2009	Wednesday	
29/10/2009	Thursday	
30/10/2009	Friday	
31/10/2009	Saturday	
01/11/2009	Sunday	
02/11/2009	Monday	R2 run for August 2009 - 2 Months after R1

03/11/2009	Tuesday	R1 run for October 2009 - 2 BD after end of the Invoice Period
04/11/2009	Wednesday	
05/11/2009	Thursday	R3 run for February 2009 - 6 Months after R2
06/11/2009	Friday	
07/11/2009	Saturday	
08/11/2009	Sunday	
09/11/2009	Monday	P1 run for December 2009 - 16 BD before start of the Invoice Period
10/11/2009	Tuesday	
11/11/2009	Wednesday	
12/11/2009	Thursday	
13/11/2009	Friday	
14/11/2009	Saturday	
15/11/2009	Sunday	
16/11/2009	Monday	
17/11/2009	Tuesday	
18/11/2009	Wednesday	
19/11/2009	Thursday	
20/11/2009	Friday	
21/11/2009	Saturday	
22/11/2009	Sunday	
23/11/2009	Monday	
24/11/2009	Tuesday	
25/11/2009	Wednesday	
26/11/2009	Thursday	
27/11/2009	Friday	
28/11/2009	Saturday	
29/11/2009	Sunday	
30/11/2009	Monday	
01/12/2009	Tuesday	
02/12/2009	Wednesday	R3 run for March 2009 - 6 Months after R2
		R2 run for September 2009 - 2 Months after R1
		R1 run for November 2009 - 2 BD after end of the Invoice Period
03/12/2009	Thursday	
04/12/2009	Friday	
05/12/2009	Saturday	
06/12/2009	Sunday	
07/12/2009	Monday	
08/12/2009	Tuesday	P1 run for January 2010 - 16 BD before start of the Invoice Period
09/12/2009	Wednesday	RF run for Tariff Year 01/04/2008 - 31/03/2009 Final Actual Settlement Run 8 months after end of Tariff Year
10/12/2009	Thursday	
11/12/2009	Friday	
12/12/2009	Saturday	
13/12/2009	Sunday	
14/12/2009	Monday	
15/12/2009	Tuesday	
16/12/2009	Wednesday	
17/12/2009	Thursday	
18/12/2009	Friday	

19/12/2009	Saturday	
20/12/2009	Sunday	
21/12/2009	Monday	
22/12/2009	Tuesday	
23/12/2009	Wednesday	
24/12/2009	Thursday	
25/12/2009	Friday	Christmas Day
26/12/2009	Saturday	
27/12/2009	Sunday	
28/12/2009	Monday	Boxing Day
29/12/2009	Tuesday	
30/12/2009	Wednesday	
31/12/2009	Thursday	

Appendix 2: Aggregated Settlement Report

This appendix sets out the format and detailed content of the Settlement Report for the Settlement Runs (P1-R3):

- Section APP 2.1 defines the Comma Separated Variable record layout by the use of an example report;
- Section APP 2.2 defines the various header and trailer records contained within a file; and
- Sections APP 2.3 to APP 2.7 provide a description of the data and its numerical derivation.

APP 2.1: Record Layout

The output file is a CSV with four columns and is structured as follows:

- Each file has 5 header rows shown in the example below as H1=>H5. The date format in H4 is as shown in the example;
- There is a separate block of rows for each Licensed Provider
- The block for each Licensed Provider commences with three header rows shown in the example below as LPH1=>LPH3;
- Water and Sewerage charges are shown in repeating blocks. The rows SE1, SE2 and SE3 are always at the start of each block. Service Elements are listed in the rows SE4a=>Se4z. These rows are data driven. For instance if there is no 15mm meter then there is no 15mm meter row. The block ends with a sub-total line SE5;
- Trade Effluent is shown in a unique block. The rows TE1, TE2 and TE3 are always at the start of the block. Each DPID is specifically listed in rows TE4a=>Te4z. These rows are data driven to provide a row for each DPID. The block ends with a sub-total line TE5;
- The block for each Licensed Provider ends with two trailer rows shown in the example below as LPT1 and LPTH2.

Note: It is a matter of fact that some of the text fields have trailing spaces (for example in row H4, column 1 below). Also, some of the numeric fields have more than two decimal places (for example in the rows SE5 and TE5 below).

For the avoidance of doubt, the total charges in pence are shown in the header line row LPH3, column 2. In every other line which shows a charge, whether it is a detail line (SE4a, SE4b... SE4z, TE4a, TE4b... TE4z) or a subtotal line (SE5 or TE5), the charges in pence are shown in column 4.

Negative values can occur in respect of both volumes and charges. They are shown using a minus sign ("-").

RowCol	1	2	3	4
H1	Type:	RUN ONE	-	-
H2	Tariff Year:	2008	-	-
H3	Invoice Period:	2: 01/05/2008 – 31/05/2008	-	-
H4	Scheduled Run Date:	01/06/2008	-	-
H5	-	-	-	-
LPH1	LP:	WorldWideWaterCompany	-	-
LPH2	-	-	-	-
LPH3	Total Charge=	84083950	Total Volume=	536320.3424
SE1	-	-	-	-
SE2	<u>Water Volumetric Charges</u>			
SE3	Service Element	Number of registered days	Volume / m3	Charge / pence
SE4a	15mm	146	730.85	50383.38
SE4b	20mm	202	402.8	14708.42
	25mm	168	1345.67	102375.52
	50mm	31	4506.8	317357.91
	200mm	62	49662.45	8038889.66
	250mm	62	556.3	124309.43
SE4z	20mm (unmeasurable)	365	1348.162	74720.44
SE5	Sub Total	-	58553.03	8722744.7616002
SE1	-	-	-	-
SE2	<u>Water Non Volumetric Charges</u>			
SE3	Service Element	Number of registered days	-	Charge / pence
SE4a	15mm	146	-	1541.92
SE4b	20mm	202	-	513.97
	25mm	168	-	5937.53
	50mm	31	-	7822.19
	200mm	279	-	12084015.34
	250mm	93	-	9084015.34
SE4z	20mm (unmeasurable)	365	-	5011.23
SE5	Sub Total	-	-	21188857.5287729
SE1	-	-	-	-
SE2	<u>Sewerage Volumetric Charges</u>			
SE3	Service Element	Number of registered days	Volume / m3	Charge / pence
SE4a	15mm	87	346.97	42578.73
SE4b	20mm	27	189.37	23260.5
	25mm	81	520.49	68491.91
	50mm	30	250.19	42168.89
	200mm	2604	267880.5	36862383.79
	250mm	806	204599.7	16109522.68
SE4z	20mm (unmeasurable)	254	947.1009	76598.79

<u>RowCol</u>	<u>1</u>	<u>2</u>	<u>3</u>	<u>4</u>
<u>SE5</u>	<u>Sub Total</u>	-	<u>474734.352554</u>	<u>53225005.293123</u>
<u>SE1</u>	-	-	-	-
<u>SE2</u>	<u>Sewerage Non Volumetric Charges</u>	-	-	-
<u>SE3</u>	<u>Service Element</u>	<u>Number of registered days</u>	-	<u>Charge / pence</u>
<u>SE4a</u>	<u>15mm</u>	<u>87</u>	-	<u>369.59</u>
<u>SE4b</u>	<u>20mm</u>	<u>27</u>	-	<u>369.59</u>
-	<u>25mm</u>	<u>81</u>	-	<u>3395.34</u>
-	<u>50mm</u>	<u>30</u>	-	<u>7397.26</u>
-	<u>200mm</u>	<u>31</u>	-	<u>117783.01</u>
-	<u>250mm</u>	<u>62</u>	-	<u>535566.03</u>
-	<u>20mm (unmeasurable)</u>	<u>254</u>	-	<u>3417.53</u>
-	<u>Road Drainage</u>	<u>582</u>	-	<u>202264.39</u>
<u>SE4z</u>	<u>Property Drainage RV</u>	<u>582</u>	-	<u>76717.75</u>
<u>SE5</u>	<u>Sub Total</u>	-	-	<u>947280.49</u>
<u>TEH1</u>	-	-	-	-
<u>TEH2</u>	<u>Trade Effluent Charges</u>	-	-	-
<u>TEH3</u>	<u>Service Element</u>	<u>Number of registered days</u>	<u>Volume / m3</u>	<u>Charge / pence</u>
<u>TE4a</u>	<u>Trade Effluent x1234</u>	<u>30</u>	<u>1354.39</u>	<u>777115.37</u>
<u>TE4b</u>	<u>Trade Effluent 783A01</u>	<u>31</u>	<u>451.88</u>	<u>19807.89</u>
-	<u>Trade Effluent 0005A02</u>	<u>31</u>	<u>466.15</u>	<u>18688.29</u>
<u>TE4z</u>	<u>Trade Effluent 0003B01</u>	<u>31</u>	<u>760.55</u>	<u>85176.77</u>
<u>TE5</u>	<u>Sub Total</u>	-	<u>3032.9739580</u>	<u>900788.3266178</u>
<u>LPT1</u>	-	-	-	-
<u>LPT2</u>	<u>END LP:</u>	<u>WorldWideWaterCompany</u>	-	-

APP 2.2: Header and Generic Data Items

<u>Report Header</u>	
<u>Type:</u>	<u>States which Settlement Run Type has been performed, as defined in CSD0201.</u>
<u>Tariff Year:</u>	<u>States the Financial Year which the Settlement Report belongs to and quotes the calendar year in which it begins.</u>
<u>Invoice Period (IP):</u>	<u>Provides the numerical value and date range that apply for that IP. This is a calendar month.</u>
<u>Scheduled Run Date:</u>	<u>The date that the Settlement Report was produced. This occurs at the beginning of the clock day (i.e. occurs before the start of the Business day if run on a Business Day).</u>
<u>Gap Line:</u>	<u>Provided before the first LP</u>
<u>Header for Each LP</u>	
<u>LP:</u>	<u>The name of the Licensed Provider who's Charges follow.</u>
<u>Gap Line:</u>	<u>Provided after the LP name</u>
<u>LPH3 Total Charge</u>	<u>The total charge for the LP named in the header. Includes all Service Elements relating to Water, Sewerage and Trade Effluent.</u>
<u>LPH3Total Volume</u>	<u>The total volume associated to both Water and Sewerage Service Volumetric Charges. It excludes Trade Effluent Volume</u>
<u>Trailer for each LP</u>	
<u>Gap Line:</u>	<u>Provided before the "End LP"</u>
<u>End LP</u>	<u>The name of the LP that has been reported in the detailed lines above.</u>

APP 2.3: Water Volumetric Charges

These exclude the fixed charge based elements of meter based charges. SPIDs subject to Transitional charges will appear twice; once for the physical based Chargeable Meter Size (CMS) and once for the Rateable Value based CMS.

<p><u>Service Elements</u></p>	<p><u>The column labelled Service Element provides the level of Reporting in Aggregate for each "Chargeable Meter Size" (CMS) that has been notified or derived. Meter and Unmeasureable CMS are reported separately. Unmeasureable CMS includes all RV derived Supply Points (i.e. Unmeasureable and Transition Arrangement SPIDs).</u></p>
<p><u>Number of registered days</u></p>	<p><u>The Number of registered days describes how many days the LP has been registered to each SPID that is aggregated for the Service Element being reported. This value is unaffected by the Vacancy or Temporary Disconnected status. It is also unaffected by any Transition percentage that is being applied. There are two counts for Transition SPIDs with meters, the physical based CMS and the RV based CMS (reported as an Unmeasureable Service Element e.g. 20mm Unmeasurable).</u></p>
<p><u>Volume (m³)</u></p>	<p><u>The volume reported is the volume associated to either the meter or the RV (for Unmeasureable CMS). It is the sum of Daily Volumes for each day the LP is registered to each SPID summed up for that Service Element CMS. The volume figure is calculated as follows:</u></p> <ul style="list-style-type: none"> ▪ <u>Transition Volume (meter): full volume based on meter reads;</u> ▪ <u>Transition Volume (RV): full volume based on RV calculations;</u> ▪ <u>Schedule 3, 29e or SEES Exempt Customers: full volume ;</u> ▪ <u>Vacant: based on the last Meter Advance; and</u> ▪ <u>Temporary Disconnection: the volume for the period spanning a temporary disconnection is set to zero.</u>
<p><u>Charge (pence)</u></p>	<p><u>The charge displayed is the Volumetric Charge associated to each SPID that falls under the Service Element CMS for the LP (the sum for all SPIDs under that CMS). The charge is calculated as follows:</u></p> <ul style="list-style-type: none"> ▪ <u>Transition Charge (meter and RV): the relevant % discount to the full charge is applied;</u> ▪ <u>Schedule 3, 29e: the relevant % discount to the full charge is applied;</u> ▪ <u>SEES (Exempt Customers): no charge, apply proportion of the SEES Credit to each of the Service Elements for this SPID;</u> ▪ <u>Vacant: zero charge for the period spanning the vacancy; and</u> ▪ <u>Temporary Disconnection: zero charge for the period spanning the temporary disconnection.</u>

APP 2.4: Water Non-Volumetric Charges

SPIDs subject to Transitional charges will appear twice; once for the physical based Chargeable Meter Size (CMS) and once for the Rateable Value based CMS.

<u>Service Elements</u>	<u>The column labelled Service Element provides the level of Reporting in Aggregate for each "Chargeable Meter Size" (CMS) that has been notified or derived. In addition, other types of Service Elements are also provided here for Miscellaneous Water Services (this includes Outside Taps and Field Troughs for both Farms and Crofts). Meter and Unmeasureable CMS are reported separately. Unmeasureable CMS includes all RV derived Supply Points (i.e. Unmeasureable and Transition Arrangement SPIDs).</u>
<u>Number of registered days</u>	<u>The Number of Registered Days describes how many days the LP has been registered to each SPID that is aggregated for the Service Element being reported. This applies regardless of whether the SPID is registered as Vacant, Temporary Disconnected or whether a Transition percentage is being applied. There are two counts for Transition SPIDs with meters, the physical based CMS and the RV based CMS.</u>
<u>Charge (pence)</u>	<u>The charge displayed is the fixed charge associated to each SPID that falls under the Service Element (CMS or Miscellaneous Service type) for the LP (the sum for all SPIDs under that Service Element). The charge is calculated as follows:</u> <ul style="list-style-type: none">▪ <u>Transition Charge (meter and RV): the relevant % discount to the full charge is applied;</u>▪ <u>Schedule 3, 29e: the relevant % discount to the full charge is applied;</u>▪ <u>SEES (Exempt Customers): no charge, apply proportion of the SEES credit to each of the Service Elements for this SPID;</u>▪ <u>Vacant: zero charge for period they are vacant; and</u>▪ <u>Temporary Disconnection: fixed charges are unaffected by temporary disconnection.</u>

APP 2.5: Sewerage Volumetric Charges

These exclude the fixed charge based elements of sewerage meter based charges. SPIDs subject to Transitional charges will appear twice; once for the physical based Chargeable Meter Size (CMS) and once for the Rateable Value based CMS.

<p><u>Service Elements</u></p>	<p><u>The column labelled Service Element provides the level of Reporting in Aggregate for each Sewerage “Chargeable Meter Size” (CMS) that has been notified or derived. Meter and Unmeasureable CMS are reported separately. Unmeasureable CMS includes all RV derived Supply Points (i.e. Unmeasureable and Transition Arrangement SPIDs).</u></p>
<p><u>Number of registered days</u></p>	<p><u>The Number of Registered Days describes how many days the LP has been registered to each SPID that is aggregated for the Service Element being reported. Regardless of whether the SPID is registered as Vacant, Temporary Disconnected or a Transition percentage is being applied. There are two counts for Transition SPIDs with meters, the physical based CMS and the RV based CMS.</u></p> <p><u>The Meter associated to the SPID is counted even if the Return to Sewer allowance is zero and/or a Non Domestic Allowance exists for Trade Effluent.</u></p>
<p><u>Volume (m³)</u></p>	<p><u>The volume is either a) the volume associated to the meter or the RV (for Unmeasureable CMS) adjusted for the Non-Return to Sewer allowance or b) the Non Domestic Allowance (NDA) where the SPID has associated Trade Effluent Discharge Point(s). It is the sum of Daily Volumes for each day the LP is registered to each SPID summed up for that Service Element CMS. The volume figure is calculated as follows:</u></p> <ul style="list-style-type: none"> ▪ <u>Transition Volume (meter): full volume based on meter reads;</u> ▪ <u>Transition Volume (RV): full volume based on RV calculations;</u> ▪ <u>Schedule 3, 29e or SEES Exempt Customers: full volume</u> ▪ <u>Vacant: based on the last Meter Advance; and</u> ▪ <u>Temporary Disconnection: the volume for the any period spanning a temporary disconnection is set to zero.</u>
<p><u>Charge (pence)</u></p>	<p><u>The charge displayed is the charge associated to each SPID that falls under the Service Element CMS for the LP (the sum for all SPIDs under that CMS). The charge is calculated as follows:</u></p> <ul style="list-style-type: none"> ▪ <u>Transition Charge (meter and RV): the relevant % discount is applied to the full charge;</u> ▪ <u>Schedule 3, 29e: the relevant % discount is applied to the full charge;</u> ▪ <u>SEES (Exempt Customers): no charge, apply proportion of the SEES Credit to each of the Service Elements for this SPID;</u> ▪ <u>Vacant: zero charge is applied for period of the vacancy; and</u> ▪ <u>Temporary Disconnection: zero charge is applied for the period of temporary disconnection.</u>

APP 2.6: Sewerage Non-Volumetric Charges

SPIDs subject to Transitional charges will appear twice; once for the physical based Chargeable Meter Size (CMS) and once for the Rateable Value based CMS.

<p><u>Service Elements</u></p>	<p><u>The column labelled Service Element provides the level of Reporting in Aggregate for each Sewerage “Chargeable Meter Size” (CMS) that has been notified or derived. In addition, other types of Service Elements are also provided here for Miscellaneous Sewerage Services (Property Drainage, Road Drainage and Caravans). Meter and Unmeasurable CMS are reported separately. Unmeasurable CMS includes all RV derived Supply Points (i.e. Unmeasurable and Transition Arrangement SPIDs).</u></p>
<p><u>Number of registered days</u></p>	<p><u>The Number of Registered Days describes how many days the LP has been registered to each SPID that is aggregated for the Service Element being reported. Regardless of whether the SPID is registered as Vacant, Temporary Disconnected or a Transition percentage is being applied. There are two Counts for Transition SPIDs with meters, the physical based CMS and the RV Based CMS.</u></p> <p><u>Note: Where the Non-Return to Sewerage Allowance (NRSA) is set to zero, the SPID will not be counted. However, where there is a Trade Effluent Non Domestic Allowance associated to a meter then registered days are counted because there will be a volume that over rides any zero NRSA on the meter</u></p>
<p><u>Charge (pence)</u></p>	<p><u>The charge displayed is the charge associated to each SPID that falls under the Service Element (CMS or Miscellaneous service type) for the LP (the sum for all SPIDs under that Service Element). The charge is calculated as follows:</u></p> <ul style="list-style-type: none"> ▪ <u>Transition Charge (meter and RV): the relevant % discount to the full charge is applied;</u> ▪ <u>Schedule 3, 29e: the relevant % discount to the full charge is applied;</u> ▪ <u>SEES (Exempt Customers): no charge, apply proportion of the SEES credit to each of the Service Elements for this SPID;</u> ▪ <u>Vacant: zero charge is applied for vacant periods; and</u> ▪ <u>Temporary Disconnection: fixed charges are unaffected by temporary disconnection.</u>

APP 2.7: Trade Effluent Charges

<u>Service Elements</u>	<u>The column labelled Service Element provides Discharge Point (DPID) level reporting.</u>
<u>Number of registered days</u>	<u>The Number of Registered Days describes how many days the LP has been registered to each DPID for the Invoice Period.</u>
<u>Volume (m³)</u>	<u>The volume is the Daily Actual Volume Discharged (DAVD) for the period or the last DAVD used as an estimate where a TE Volume submission does not cover the period.</u>
<u>Charge (pence)</u>	<u>The charge displayed is the charge associated to each DPID. The percentage discount will be applied to DPIDs with Schedule 3 arrangements on them.</u>