

Market Code Schedule 19

Code Subsidiary Document No. 0206

Trade Effluent Processes

Version: 1.4

Date: 27/09/2010

Document Ref: CSD0206

Change History

Version Number	Date of Issue	Reason For Change	Change Control Reference	Sections Affected
1.0	14/05/2007	First Publication		
1.1	31/08/2007	Alignment with revisions to market processes		
1.1a	09/09/2009	Standardise layout of the first two pages		Pages 1 and 2
1.2	29/03/2010	RF Changes. Recalculation of TE, application of minimum charge.	MCCP046-CC	
1.3	12/08/2010	Improved explanation of calculation of DAVD	MCCP049	2.2.1
1.4	27/09/10	Restrict Future Dates on Transaction T025 Clarification of SGES Discount	MCCP060 MCCP064	2.1.4 2.2

Table of Contents

1.	Purpose and Scope	4
2.	Description of Trade Effluent Charge Processing	5
2.1	Trade Effluent SPID Data/Scottish Water Data requirements	5
2.2	Trade Effluent Calculations	12
3.	Process Diagrams	18
4.	Interface and Timetable Requirements	24
4.1	TE data requirements – New Discharge Point	24
4.2	TE data requirements – Discontinue DPID	24
4.3	TE data requirements – Update DPID details and Notify TE Volume	25
4.4	TE Calculations – Daily and Monthly	26
4.5	TE Calculations – Tariff Year Settlement Run	28
	Appendix 1 –Schedule 3 Agreements for Trade Effluent	31

1. Purpose and Scope

This document sets out the processes for Trade Effluent Services settlement. The CMA will calculate and allocate the Wholesale Charges payable in respect of Trade Effluent Services in accordance with this procedure. It covers the information submissions that the CMA requires in relation to: commencement, modification and discontinuation of Trade Effluent Services (including as a result of a New Connection) and the calculation of the Volume of Trade Effluent Services.

Appendix 1 provides details for the calculation of Wholesale Charges for Trade Effluent Services where there is a Schedule 3 arrangement in place.

2. Description of Trade Effluent Charge Processing

The CMA will calculate the Wholesale Charges payable in respect of Trade Effluent Services in relation to each Discharge Point relating to a Supply Point. A Sewerage Supply Point may have more than one Discharge Point associated with it, but any Discharge Point will only relate to one Sewerage Supply Point.

The CMA will not aggregate the Wholesale Charges payable in respect of Trade Effluent Services in relation to a Supply Point. The information shown on the Settlement Reports will be notified for each Discharge Point.

2.1 Trade Effluent SPID Data/Scottish Water Data requirements

This section describes the data that the CMA will require in order to calculate the Wholesale Charges payable in respect of Trade Effluent Services at each Discharge Point relating to a Sewerage Supply Point. Scottish Water shall provide the data either as part of the Scottish Water Data, or in accordance with the processes outlined in this CSD.

2.1.1 Notification of a New Discharge Point(s)

A Discharge Point shall be notified to the CMA in order to commence Trade Effluent Services in relation to a Sewerage Supply Point. This may be when:

- i. a New Connection or a New Supply Point for Sewerage Services is created in accordance with CSD 0101 (Registration New Connections and New Supply Points) and has a related Discharge Point(s); or
- ii. Trade Effluent Services are commenced at an existing Sewerage Supply Point, for example on grant of consent for Trade Effluent under the Operational Code, in which case the related Discharge Point(s) must be established in the Central Systems.

In either case, the details for the Discharge Point related to a Sewerage Supply Point will form part of the SPID Data for that Supply Point.

Trade Effluent relevant SPID Data

Scottish Water will provide the CMA with the following information in respect of each Discharge Point at a Sewerage Supply Point, which the CMA will hold as part of the relevant SPID Data using the Data Transaction T021.0 (Notify DPID) and T023.0 (Notify Meter Association), if relevant:

DPID: The unique identifier allocated to the Discharge Point by Scottish Water in respect of the Trade Effluent Services relevant to that Discharge Point(s).

Effective From Date in relation to the Discharge Point: The date from which Trade Effluent Services are commenced at the relevant Discharge Point(s)

Annual Non-domestic Allowance: The Actual Yearly Volume of Foul Sewerage Services in relation to the relevant Supply Point (which Actual Yearly Volume is not Actual Volume Discharged of Trade Effluent Services provided in relation to the Discharge Point(s)).

Seasonal discharge indicator: Notification of requirement to apply a premium to the Wholesale Charges payable in respect of Trade Effluent Services in accordance with the Wholesale Charges Scheme.

Trade Effluent Estimated Yearly Volume: Notification of the Estimated Yearly Volume of Trade Effluent Services in relation to the Discharge Point for initial use in settlement calculations until the Actual Volume Discharged of Trade Effluent Services is provided to the CMA.

Trade Effluent availability data:

Chargeable Daily Volume (m³); CDV (Note: this Volume may vary on a seasonal basis, in which case the differing Chargeable Daily Volumes are to be supplied, along with the relevant dates within which those differing values will apply.

Chargeable Settled Biological Oxygen Demand load (kg/day); sBODI

Chargeable Total Suspended Solids load (kg/day); TSSI

Trade Effluent operating data:

Fixed Strength Chemical Oxygen Demand; Ot

Fixed Strength Solids Demand; St

Where the CMA accepts the T021.0, the CMA will notify the Sewerage Licensed Provider of the Discharge Point(s) using Data Transaction T021.1.

Where the CMA rejects the notification of the Discharge Point(s), it will notify Scottish Water of the rejection, together with the reason, using the Data Transaction T009.1 (Error Notification) within 1 Business Day of receiving the T021.0.

Meter Association [T023.0 T023.1]) In the event that any meter, which includes a Related Water Supply Meter, is associated with a Discharge Point, Scottish Water shall notify such association to the CMA within 2 Business Days of the relevant meter being so associated using the Data Transaction T023.0 (Notify Meter Association).

Within 1 Business Day of receipt of the T023.0

- i. where the CMA accepts the T023.0, it will notify the Sewerage Licensed Provider of the meter association using Data Transaction T023.1; or
- ii. where the CMA rejects the T023.0, it will notify Scottish Water of the rejection, together with the reason, using the Data Transaction T009.1 (Error Notification).

Summary of Trade Effluent relevant SPID Data: (see also CSD0301 (Data Transaction Catalogue) for the complete definitions and Data Transactions).

Data Item	Name	Description
D6001	DPID	Discharge Point ID
D6003	CDV	TE Availability data: Chargeable Daily Volume (m ³)
D6004	sBODI	TE Availability data: Chargeable Settled Biochemical Oxygen Demand load (kg/day)
D6005	TSSI	TE Availability data: Chargeable Total Suspended Solids load (kg/day)
D6006	Ot	TE Operating Data: Fixed Strength Chemical Oxygen Demand
D6007	St	TE Operating Data :Fixed Strength Solids Demand
D6002	TYVE	Trade Effluent Estimated Yearly Volume
D6008	Actual Volume Discharged	TE Volume: the total Volume in m ³ notified for the Discharge Point
D4006	Effective from date	The effective date of a Discharge Point or data in relation to a Discharge Point (see CSD0301for use),
D6009	Annual Non-domestic Allowance	Annual Actual Yearly Volume of Foul Sewerage Services in relation to the relevant Discharge Point (m ³)
D6010	SD Indicator	Flag to apply premium required for seasonal discharge.

Scottish Water Data

The following data will apply to Trade Effluent Services, and will therefore be submitted to the CMA by Scottish Water as part of the Scottish Water Data:

Trade Effluent operating data:

- Standard Strength Chemical Oxygen Demand; Os
- Standard Strength Solids Demand; Ss

Trade Effluent tariff data:

- Reception Capacity Charge (£/m³); Ra
- Volumetric Capacity Charge (£/m³); Va
- Biological Capacity Charge (£/kg/day); Ba
- Sludge Capacity Charge (£/kg/day); Sa
- Reception Operating Charge (£/m³); Ro
- Volumetric Operating Charge (£/m³); Vo
- Biological Operating Charge (£/m³); Bo
- Sludge Operating Charge (£/m³); So
- minimum charge in respect of Trade Effluent Services (annual value in £ set out in the Wholesale Charges Scheme)

Recommencement of Trade Effluent Services at a Sewerage Supply Point

In the event that a Discharge Point is to be recommenced following discontinuance, Scottish Water shall notify the CMA using the T021.0 (Notify DPID) and shall not reuse the identifier previously used for that DPID, although all other Discharge Point values in the T021.0 may be the same values as at the previous DPID. In the event that a meter is to be associated to that new DPID, this should be notified using the T023.0 (Notify Meter Association).

2.1.2 Discontinuation of a Discharge Point/Trade Effluent Services

Permanent Disconnection

In the case of a Permanent Disconnection of a Sewerage Services Supply Point under CSD0104 (Maintain SPID Data), Trade Effluent Services and all related Discharge Points will cease as at the date of the Permanent Disconnection so notified.

Discontinuation of a Discharge Point / Trade Effluent Services [T026.0, T026.1]

In the case of discontinuation of any or all of the Trade Effluent Services relating to a Sewerage Supply Point, for example due to a restriction of the Trade Effluent Services related to that Supply Point, Scottish Water will notify the CMA using Data Transaction T026.0 (Discontinue DPID) within 2 Business Days of such discontinuation. In the event that all Trade

Effluent Services are to cease in relation to a Sewerage Supply Point, for example following the termination of a consent in respect of the Trade Effluent Services in accordance with the Operational Code, Scottish Water shall notify the discontinuation of all Discharge Points relating to that Supply Point in the Data Transaction T026.0 (Discontinue DPID). The CMA will then only calculate the Wholesale Charges payable in respect of the remaining sewerage for that Supply Point, in accordance with CSD0205 (Invoice Period Charge Calculation, Allocation and Aggregation).

The CMA will also notify the Sewerage Services Licensed Provider of the change in Trade Effluent Services in relation to the Supply Point using Data Transaction T026.1 (Discontinue DPID) within 1 Business Day of receiving the T026.0.

2.1.3 Maintain Trade Effluent Services SPID Data

In the event of any change(s) to Trade Effluent Services other than in Sections 2.1.1 and 2.1.2 above, Scottish Water shall notify the CMA of such changes to the SPID Data, (which includes changes to the relevant Discharge Point) within 2 Business Days of the date of the change(s) using the relevant Data Transaction, as listed below.

Meter De-association (T024.0, T024.1)

When a meter associated with a Discharge Point ceases to be so associated, Scottish Water shall notify the CMA of that de-association within 2 Business Days of the association being ceased, using the Data Transaction T024.0 (Notify Meter De-association).

Where the CMA accepts the change(s), within 1 Business Day of receipt of the T024.0 the CMA will notify the Sewerage Services Licensed Provider of the Meter De-association using Data Transaction T024.1 (Notify Meter De-association).

Where the CMA rejects the change(s), it will notify Scottish Water of the rejection, together with the reasons, using the Data Transaction T009.1 (Error Notification) within 1 Business Day of receiving the T024.0.

Late or corrective changes

In the event that Scottish Water needs to submit a late or corrective change to the SPID Data in respect of Trade Effluent Services, this shall be undertaken in accordance with CSD0105 (Error Rectification and Retrospective Amendments).

2.1.4 Trade Effluent Volume Submission

The CMA will receive details of the Volume of Trade Effluent Services in relation to a Discharge Point via the Data Transaction T025.2 or T025.0 (Notify TE Volume) from either Scottish Water or the Registered Licensed Provider, respectively. The CMA will then provide

the relevant Trading Party (either Scottish Water or the Registered Sewerage Licensed Provider) with the Volume of Trade Effluent notified to it. In the event an effective date in the future is notified the CMA will send a Data Transaction T009.1 with the error code DK “Effective From Date cannot be in the future”.

The “Actual Volume Discharged” data item submitted in the T025.0 or T025.2, as appropriate, shall be used to calculate the total Volume of Trade Effluent Services applicable the calculations below (i.e. by deducting any Annual Non-domestic Allowance) for the period since the previous Actual Volume Discharged of Trade Effluent Services notification or start of the Discharge Point.

2.1.5 Transfer Registration

In the case of a Transfer¹ of a Sewerage Services Supply Point in relation to which Trade Effluent Services are also provided, the Incoming Licensed Provider for that Supply Point shall be responsible for the Wholesale Charges in respect of Trade Effluent Services at that Supply Point with effect from its Registration Start Date and the CMA shall allocate such Wholesale Charges accordingly.

Within 1 Business Day of the Registration Application Date, the CMA shall notify the Incoming Licensed Provider of the Discharge Point(s) at that Supply Point, using Data Transaction T021.1 (Notify DPID) and any meter(s) associated with that Discharge Point, using Data Transaction T023.1 (Notify Meter Association). This will occur at the same time as the CMA sends the Confirmation Notice (T008.1) and notification of SPID Data (T020.0) as set out in CSD0102 (Registration: Transfers).

2.1.6 Vacant Premises

Volume Notifications

In the case where a premises becomes Vacant, the following “Actual Volume Discharged” notifications shall be submitted using the T025.0 or T025.2 transactions as appropriate to ensure the correct calculation of Trade Effluent volumetric charges in the period immediately prior to the premises becoming Vacant.

- A notification of the Actual Volume Discharged with an effective date of the day the premises become Vacant, with the outstanding Actual Volume Discharged up to the start of the period of Vacancy.
- A notification of zero Actual Volume Discharged with an effective date of the day after the premises become Vacant.

¹ Refer to CSD0102 (Registration: Transfers)

In the case where a Vacant Premises becomes reoccupied the following “Actual Volume Discharged” notifications shall be submitted using the T025.0 or T025.2 transactions as appropriate to ensure the correct calculation of Trade Effluent volumetric charges in the period immediately following the premises becoming reoccupied.

- A notification of zero Actual Volume Discharged with an effective date of the day the premises become reoccupied.
- The immediate subsequent notification of Actual Volume Discharged should notify the Actual Volume Discharged from the date of reoccupation.

Vacancy Notifications

The Central Systems continue to charge for Trade Effluent Services during periods when a premises is Vacant. In respect of SPIDs with Trade Effluent Services, Licensed Providers shall therefore ensure that they directly inform Scottish Water that such SPIDs have been notified Vacant within 2 Business Days of the start of the Vacancy. Within 2 Business Days of such notification, Scottish Water shall terminate charges for the Trade Effluent by submitting a Trade Effluent Schedule 3 notification with a value of 100% using the Data Transaction T028.1. Within 1 Business Day of receipt of the T028.1, the CMA shall either:

- i. Reject that transaction and will notify Scottish Water of that rejection and the reason using the Data Transaction T009.1 (Error Notification); or
- ii. Accept that transaction and notify the Licensed Provider of the details using Data Transaction T028.0 (Notify TE Schedule 3) as appropriate.

Licensed Providers shall also ensure that they directly inform Scottish Water that such SPIDs have been reoccupied within 2 Business Days of the end of the Vacancy. Within 2 Business Days of such notification, Scottish Water shall restart charges for the Trade Effluent by submitting a Trade Effluent Schedule 3 notification with the appropriate substantive value using the Data Transaction T028.1. Within 1 Business Day of receipt of the T028.1, the CMA shall either:

- i. Reject that transaction and will notify Scottish Water of that rejection and the reason using the Data Transaction T009.1 (Error Notification); or
- ii. Accept that transaction and notify the Licensed Provider of the details using Data Transaction T028.0 (Notify TE Schedule 3) as appropriate.

2.1.7 Temporarily Disconnected Premises

Volume Notifications

In the case where a premises becomes Temporarily Disconnected, the following “Actual Volume Discharged” notifications shall be submitted using the T025.0 or T025.2 transactions as appropriate to ensure the correct calculation of Trade Effluent volumetric charges in the period immediately prior to the premises becoming Temporarily Disconnected.

- A notification of the Actual Volume Discharged with an effective date of the day the premises become Temporarily Disconnected, with the outstanding Actual Volume Discharged up to the start of the period of Temporary Disconnection.
- A notification of zero Actual Volume Discharged with an effective date of the day after the premises becomes Temporarily Disconnected.

In the case where a Temporarily Disconnected Premises becomes reconnected the following “Actual Volume Discharged” notifications shall be submitted using the T025.0 or T025.2 transactions as appropriate to ensure the correct calculation of Trade Effluent volumetric charges in the period immediately following the premises becoming reconnected.

- A notification of zero Actual Volume Discharged with an effective date of the day the premises become reconnected.
- The immediate subsequent notification of Actual Volume Discharged should notify the Actual Volume Discharged from the date of reconnection.

2.2 Trade Effluent Calculations

When calculating the Wholesale Charges payable in respect of the Trade Effluent Services in relation to a Discharge Point, the CMA will perform the following calculations:

1. The CMA will calculate the Daily Actual Volume Discharged in relation to the Discharge Point;
2. The CMA will calculate both the Daily Availability Charge and Daily Operating Charge payable in respect of the Discharge Point;
3. The CMA will allocate those Daily Availability and Operating Charges to the relevant Licensed Provider;
4. When carrying out a monthly Invoice Period Settlement Run, the CMA will aggregate those Charges for the relevant Invoice Period to identify the Wholesale Charges payable by the Licensed Provider over that Invoice Period in respect of the Trade Effluent Services in relation to the Discharge Point;
5. There are no Wholesale Charges payable in respect of Trade Effluent Services in relation to each Discharge Point relating to a Supply Point that qualifies for exemption under the [Water and Sewerage Services Charges \(Exemption\) \(Scotland\) Regulations 2002 as amended](#) (the “Scottish Government Exemption Scheme or SGES) (see CSD0206 Appendix 2.1). The CMA shall dis-apply any such calculated Wholesale Charges. or
6. When carrying out an RF Settlement Run, the CMA will aggregate those Charges for the Year to provide an initial identification of the Wholesale Charges payable by the Licensed Provider over the Year in respect of Trade Effluent Services in relation to

the Discharge Point. The CMA will then compare the total Wholesale Charges so identified with the minimum charge. If the total Wholesale Charges are less than the minimum charge, the CMA will appropriately adjust the charges payable by each Licensed Provider

Following these calculations, the CMA will produce the relevant Settlement Reports in accordance with the Settlement Timetable outlined in CSD0201 (Settlement Timetable and Reporting).

2.2.1 Calculation of Daily Actual Volume Discharged (Step 1)

For each Settlement Day d within a Discharge Period, the CMA will calculate the Daily Actual Volume Discharged (DAVD) in relation to each Discharge Point by using the following formula:

$$DAVD_d = AVD / (D_2 - D_1)$$

Where:

D_1 is the first day of the Discharge Period;

D_2 is the day after the last day of the Discharge Period;

AVD is the Actual Volume Discharged and notified with the effective date of D_2 ; and

$DAVD_d$ is the Daily Actual Volume Discharged in relation to the Discharge Point for the relevant Settlement Day for $D_1 \leq d < D_2$;

AVD is the Actual Volume Discharged of Trade Effluent Services in relation to a Discharge Point for the period since the previous submission, or commencement of that Discharge Point (for the first notification of Actual Volume Discharged for Trade Effluent);

For each Settlement Day d within a Post Discharge Period the CMA will calculate the Daily Actual Volume Discharged in relation to each Discharge Point by using the following formula:

$$DAVD_d = DAVD_{d'} \text{ for the last day } d' \text{ within a Discharge Period}$$

The CMA will calculate the Daily Non-domestic Allowance from the Annual Non-domestic Allowance using the following formula:

$$DNDA = ANDA / DIY$$

Where:

DNDA is the Daily Non-domestic Allowance;

ANDA is the relevant Annual Non-domestic Allowance; and

DIY is the number of days in the relevant Year.

The Annual Non-domestic Allowance is used in the calculation of the volumetric Wholesale Charges payable in respect of Foul Sewerage Services in relation to the sewerage Supply Point as set out in CSD0205 (Invoice Period Charge Calculation, Allocation and Aggregation) and CSD0207 (RF Charge Calculation, Allocation and Aggregation). When the Annual Non-domestic Allowance is greater than zero, and at least one of the meters has a return to sewer allowance which is greater than zero, the Non-domestic allowance replaces any meter derived Volumes where the sewerage Supply Point has associated Trade Effluent Services.

2.2.2 Daily Availability and Operating Charge Calculations (Step 2)

The CMA will calculate the Daily Availability Charge for a Discharge Point as follows:

$$ACc = [(CDV \times (Ra + Va)) + (Ba \times sBODI) + (Sa \times TSS)] \times SF$$

Where:

SF is the Seasonal Factor

The CMA sets the Seasonal Factor to a value of 1.2 to increase the Daily Availability Charge in cases where a Discharge Point is subject to seasonal discharge in accordance with the provisions set out in the Wholesale Charges Scheme. In all other cases the CMA sets the Seasonal Factor to a value of 1.0.

The CMA will calculate the Daily Operating Charge (OP_c) for a Discharge Point as follows:

$$OPc = DAVD \times (Ro + Vo + (Bo \times (Ot / Os)) + (So \times (St / Ss)))$$

The CMA will then calculate the Wholesale Charge payable for the Settlement Day in respect of a Discharge Point using the following formula:

$$DTEC = ACc + OPc$$

Where:

DTEC is the Daily Trade Effluent Charge;

AC_c is the relevant Daily Availability Charge; and

OP_c is the relevant Daily Operating Charge.

2.2.3 Allocation of the Daily Charge (Step 3)

The CMA will allocate the Daily Trade Effluent Charge for each Discharge Point to the Licensed Provider registered to the associated Sewerage Supply Point on the relevant Settlement Day.

2.2.4 Disapplication of Charges for Exempt Sites (Step 4)

The CMA will dis-apply the Daily Trade Effluent Charge for each Discharge Point which relates to a Supply Point which qualifies for exemption under the Scottish Government Exemption Scheme (see CSD0206 Appendix 2.1).

2.2.5 Invoice Period Aggregation of the Daily Charge (Step 5)

When carrying out a monthly Invoice Period Settlement Run, the CMA will then aggregate the Daily Trade Effluent Charges payable by the Licensed Provider in respect of a Discharge Point over each Invoice Period using the following formula:

$$IPTEC_{DPLP} = \sum DTEC_{DPLP}$$

Where:

$IPTEC_{DPLP}$ is the Invoice Period Trade Effluent Charge payable by the Licensed Provider in respect of that Discharge Point; and

$\sum DTEC_{DPLP}$ is the sum of the Daily Trade Effluent Charges payable by the Licensed Provider in respect of that Discharge Point.

2.2.6 Tariff Year Settlement of Trade Effluent Charges (Step 6)

When carrying out a Tariff Year Settlement Run, the CMA will then aggregate the Daily Trade Effluent Charges payable by the Licensed Provider in respect of a Discharge Point over the Year using the following formula:

$$YTEC_{DPLP} = \sum DTEC_{DPLP}$$

Where:

$YTEC_{DPLP}$ is the Year Trade Effluent Charge payable by the Licensed Provider in respect of that Discharge Point; and

$\sum DTEC_{DPLP}$ is the sum of the Daily Trade Effluent Charges payable by the Licensed Provider in respect of that Discharge Point.

A minimum charge (as set out in the Wholesale Charges Scheme) is payable in respect of a Discharge Point. At the end of each Year, as part of the RF Settlement Run, the CMA will calculate whether the Wholesale Charges payable in respect of a Discharge Point are less than the minimum charge.

Where either

- a Sewerage Services Supply Point (with related Discharge Point(s)) has been registered for a period less than a Year,
- a Sewerage Services Supply Point (with related Discharge Point(s)) qualifies for exemption under the Scottish Government Exemption Scheme; or
- a Discharge Point was commenced in the Central Systems during the Year,

the CMA will calculate the proportionate minimum charge prior to its use in comparing it to the Wholesale Charges payable in respect of the Discharge Point for that Year, using the following formula:

$$MC_A = MC * DIY_{DP} / DIY$$

Where:

MC_A is the minimum charge payable for the Discharge Point over the Year;

MC is the minimum charge as set out in the Wholesale Charges Scheme for the relevant Year;

DIY_{DP} is the number of days in the relevant Year that the relevant Sewerage Supply Point was first Registered with the CMA, or the Discharge Point was commenced in the Central Systems and in either case the Discharge Point is not exempt under the Scottish Government Exemption Scheme; and

DIY is the number of days in the relevant Year.

The CMA will then aggregate the Year Trade Effluent Charges, for each Discharge Point over the relevant Year as follows:

$$YTEC_{DP} = \sum YTEC_{DPLP}$$

Where:

$YTEC_{DP}$ is the Year Trade Effluent Charge for the Discharge Point; and

$\sum YTEC_{DPLP}$ is the sum of Year Trade Effluent Charges payable to each Licensed Provider over the relevant Year.

The CMA will then compare the Year Trade Effluent Charge against the Discharge Point's minimum charge and where the Year Trade Effluent Charge is less than the Discharge Point's minimum charge ($YTEC_{DP} < MC_A$ or $YTEC_{DP} < MC$ as the case may be).

Where the Year Trade Effluent Charge is less than the Discharge Point's minimum charge, the CMA then will calculate any minimum charge payable by each Licensed Provider as follows:

$$MC_{LP} = MC_A * NRD_{LP} / DIY_{DP}$$

Where:

MC_{LP} is the minimum charge payable by the Licensed Provider in respect of the Discharge Point over the relevant Year;

MC_A is the minimum charge payable in respect of the Discharge Point for the relevant Year;

NRD_{LP} is the number of days in the relevant Year that the relevant Supply Point was Registered to the Licensed Provider and the Discharge Point is not exempt under the Scottish Government Exemption Scheme; and

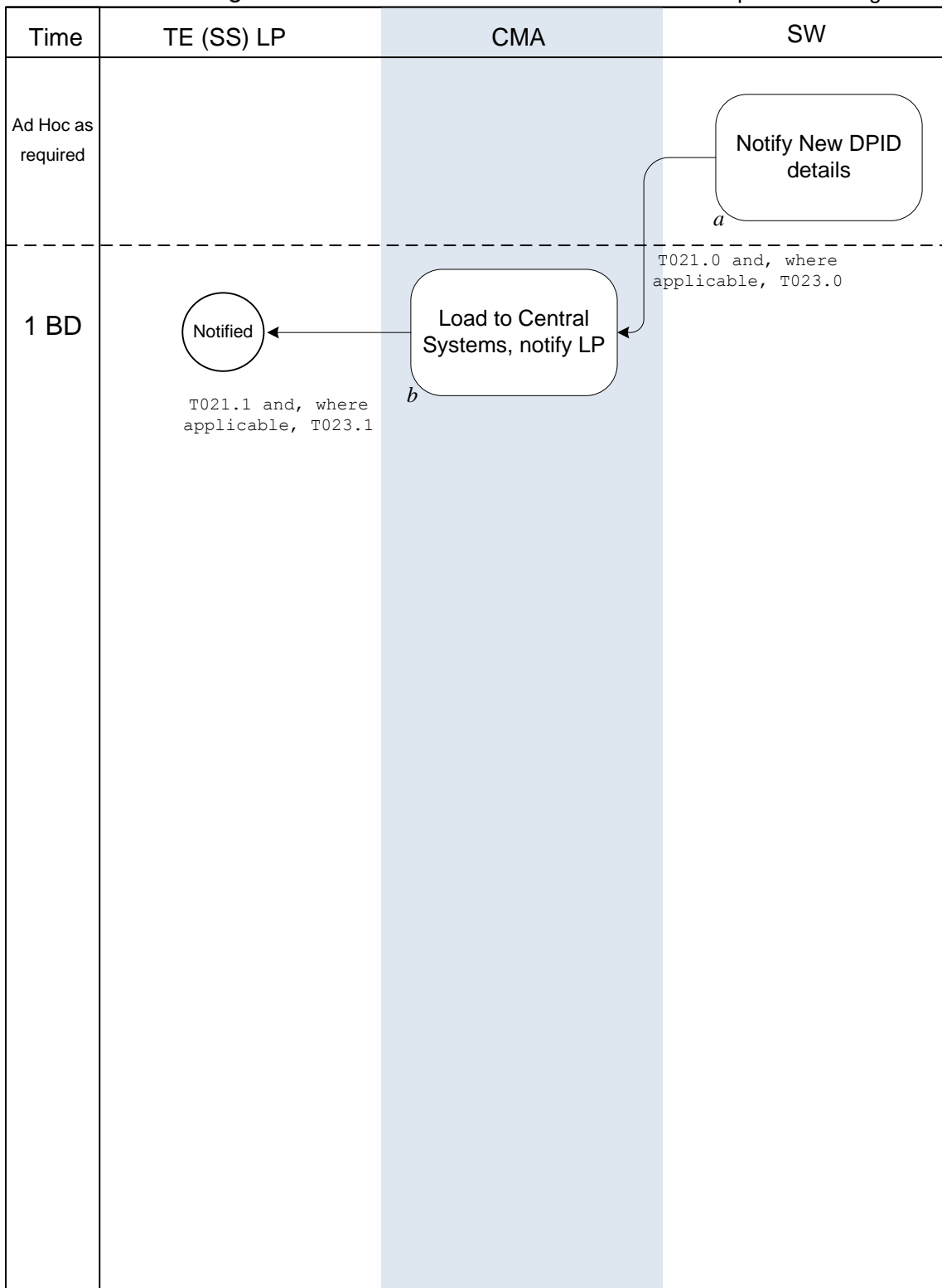
DIY_{DP} is the number of days in the relevant Year from the date that the Discharge Point was commenced in the Central Systems.

The CMA will then report the minimum charge MC_{LP} as *the applicable value of $YTEC_{DPLP}$* so payable by the Licensed Provider as opposed to the previously calculated value of $YTEC_{DPLP}$

3. Process Diagrams

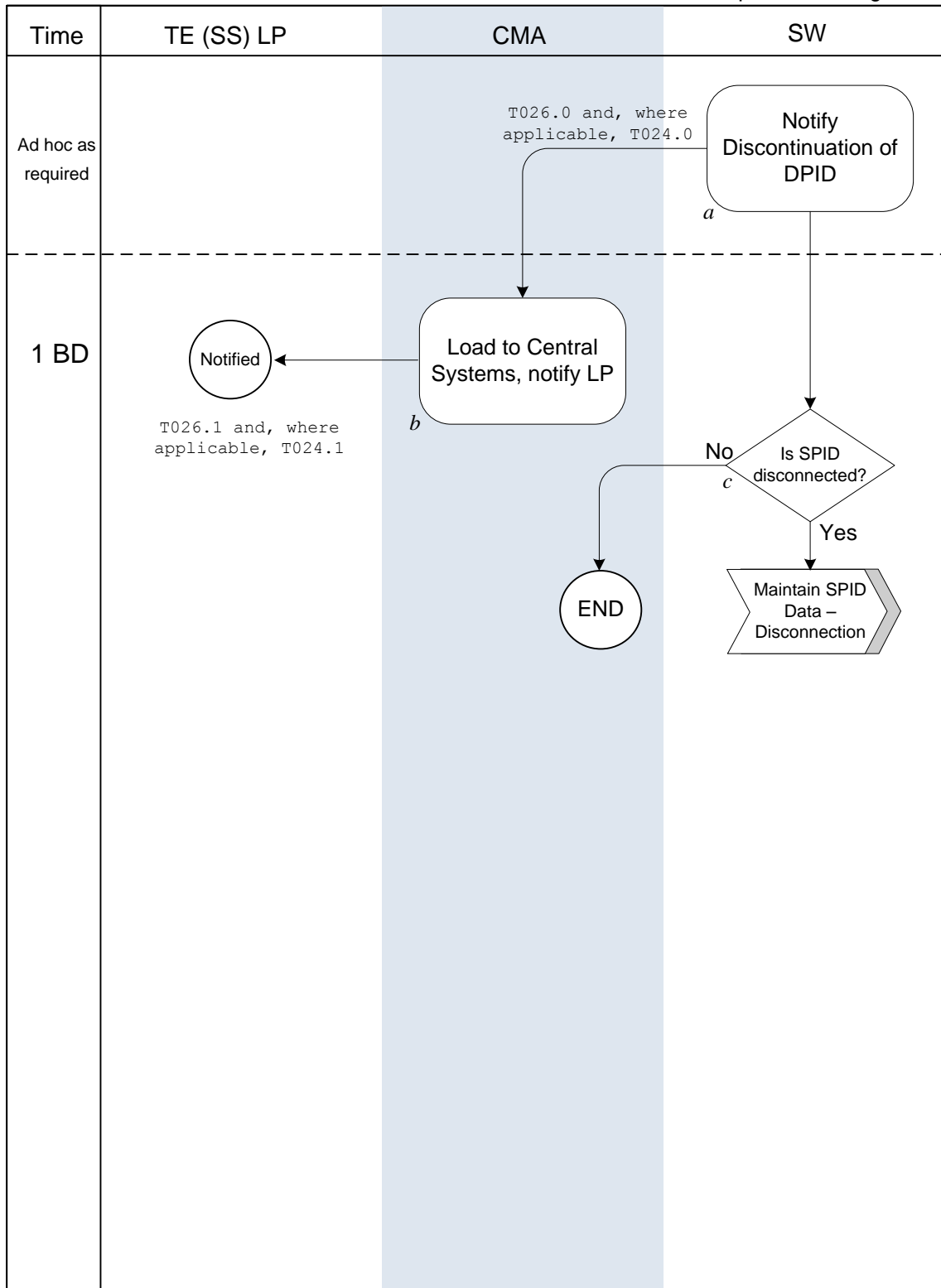
TE – New Discharge Point

Updated 23 August 07



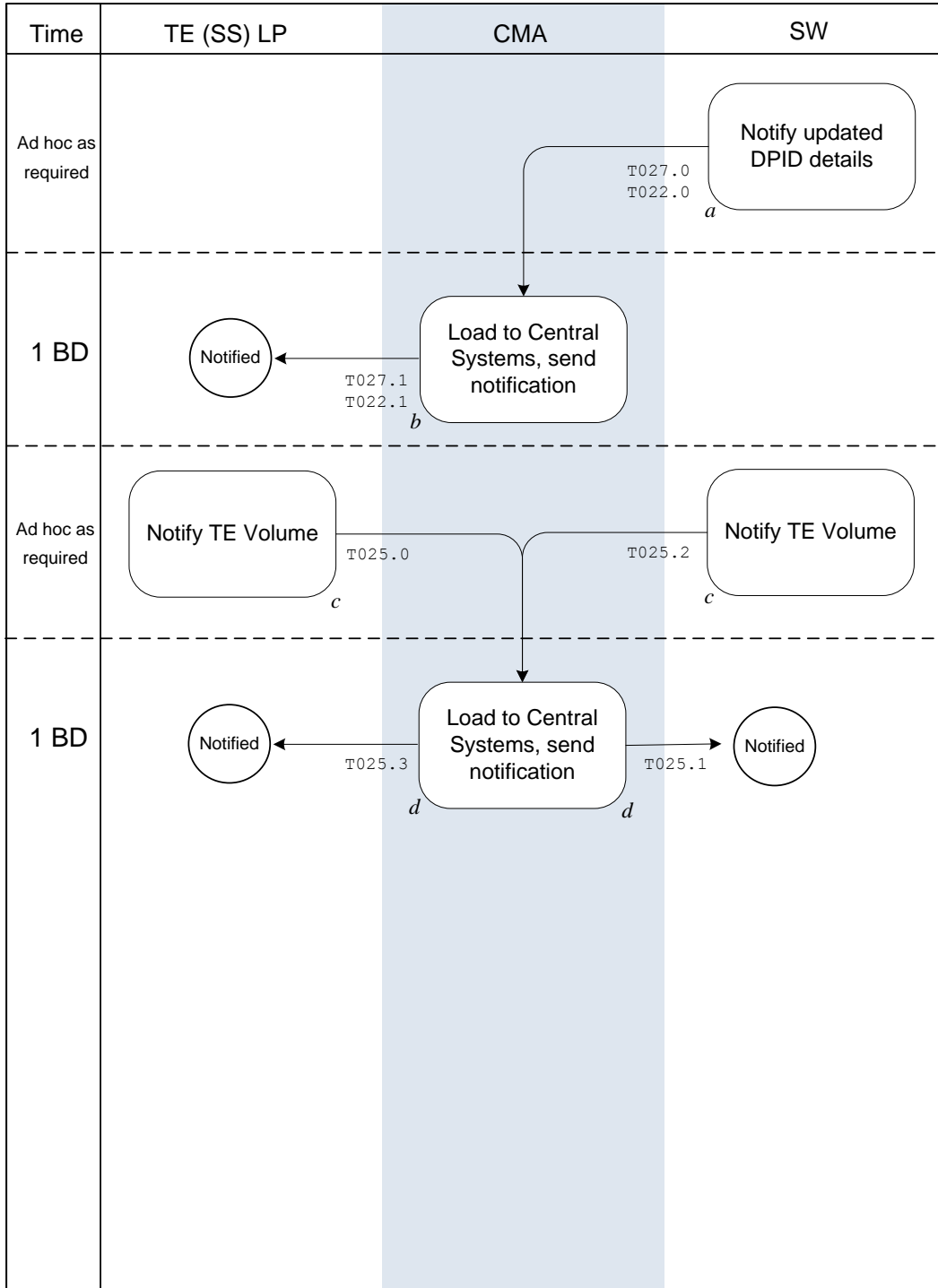
TE – Discontinue DPID

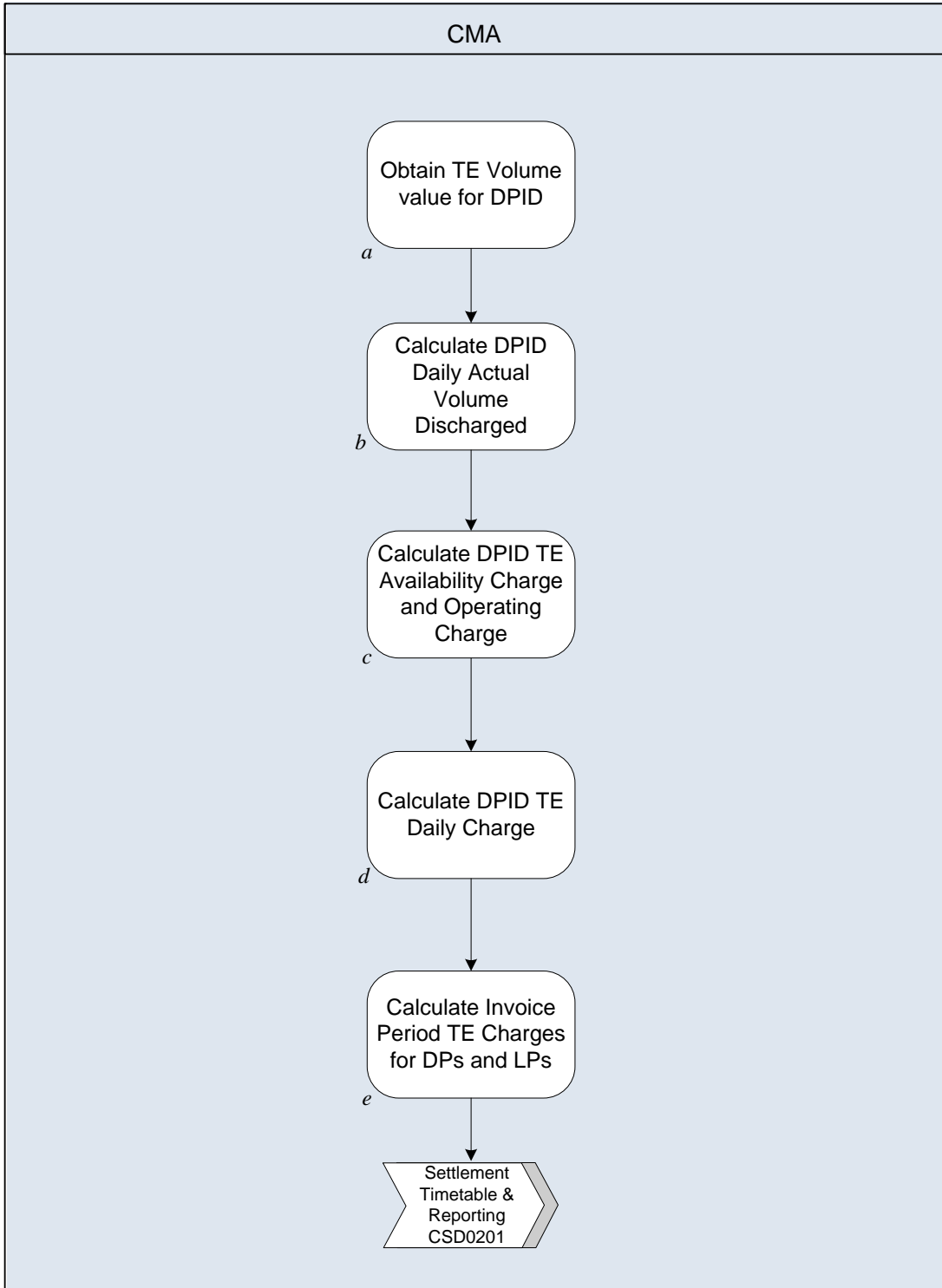
Updated 23 August 07

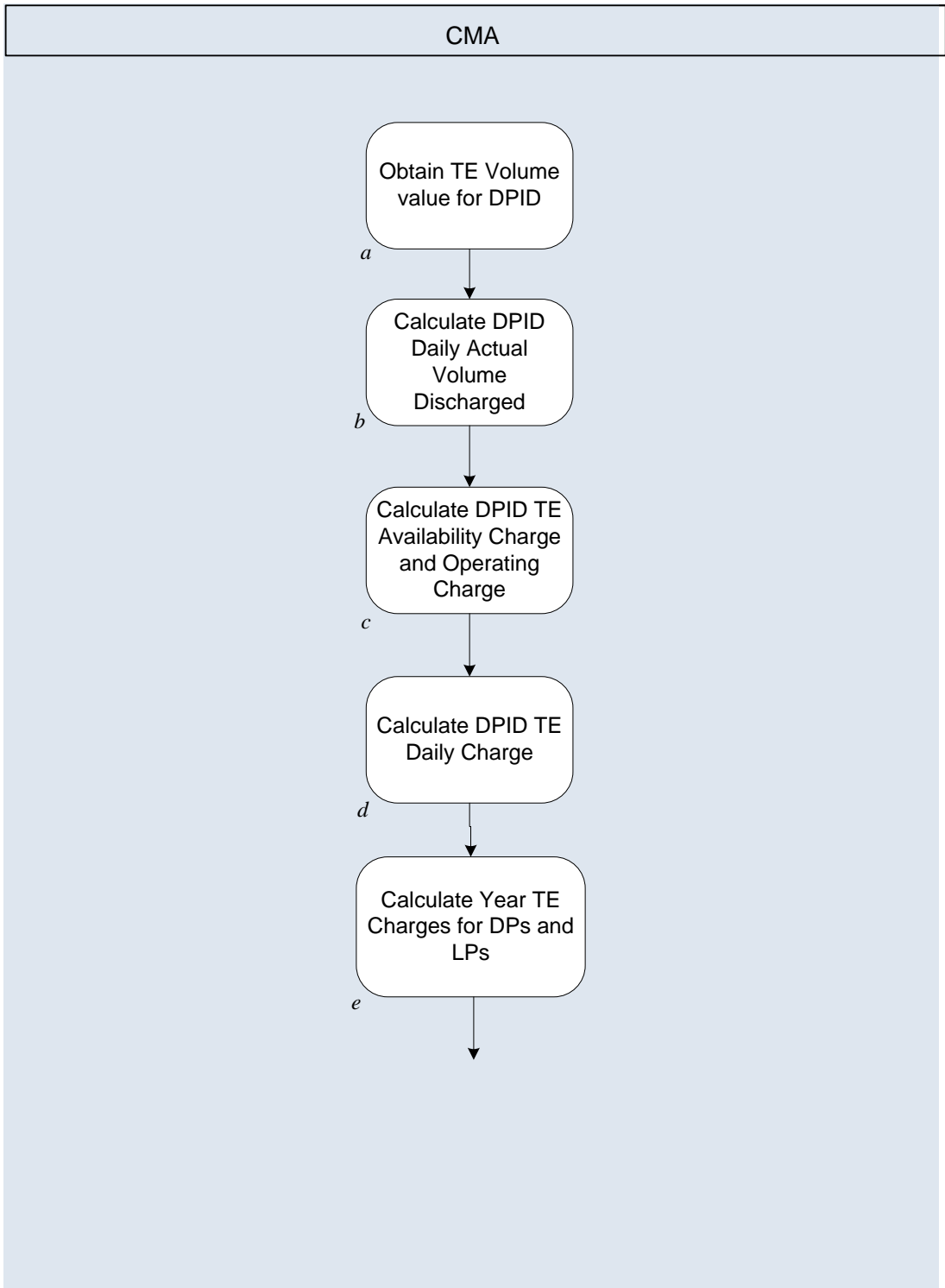


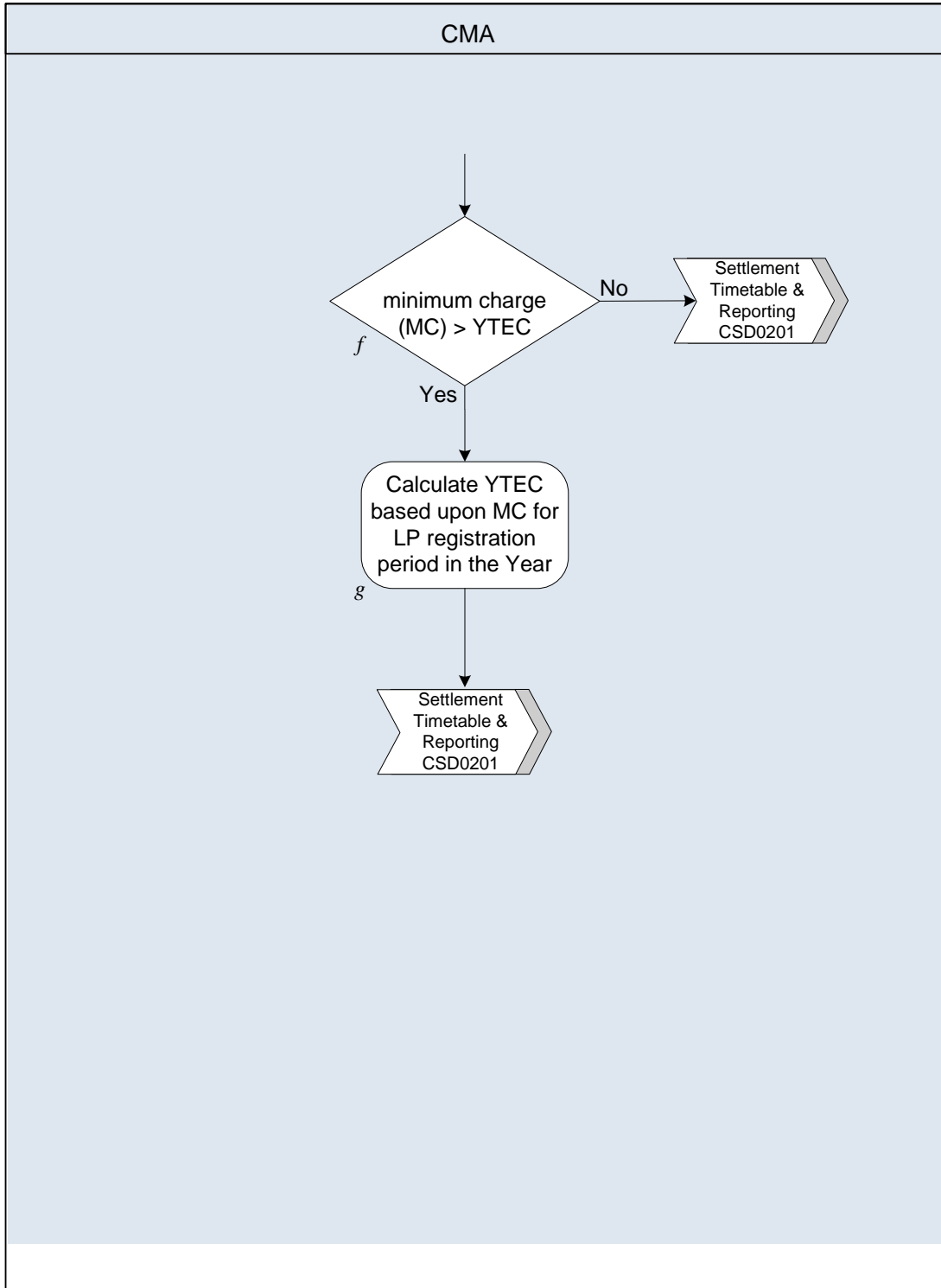
TE – Update DPID details and Notify TE volume

Updated 02 August 2007









4. Interface and Timetable Requirements

4.1 TE data requirements – New Discharge Point

Step Ref:	When	Requirement	From	To	Information	Method
a	Ad Hoc as required	Notify New DPID details	SW	CMA	New DPID(s) details & Meter(s) Associated, where applicable	T021.0 and T023.0
b	1BD	Load to Central Systems, notify LP	CMA	LP	New DPID details & Meter Associated, where applicable	T021.1 and T023.1

4.2 TE data requirements – Discontinue DPID

Step Ref:	When	Requirement	From	To	Information	Method
a	Ad Hoc as required	Notify Discontinuation of DPID	SW	CMA	DPID(s) and Meter(s) De-association, where applicable	T026.0 and T024.0
b	1BD	Load to Central Systems, notify LP	CMA	SS LP	DPID and Meter De-association, where applicable	T026.1 and T024.1
c	n/a	If SPID is Disconnected, go to Maintain SPID Data, CSD0104	n/a	n/a		

4.3 TE data requirements – Update DPID details and Notify TE Volume

Step Ref:	When	Requirement	From	To	Information	Method
a	Ad Hoc as required	Notify updated DPID details	SW	CMA	DPID	T027.0 or T022.0
b	1BD of a above	Load to Central Systems, notify LP or SW	CMA	SS LP	DPID	T027.1 or T022.1
c	Ad Hoc as required	Notify TE Volume	SW or LP	CMA	TE Volume	T025.0 or T025.0
d	1BD of c	Load to Central Systems, notify LP or SW	CMA	SW or SS LP	TE Volume	T025.1 or T025.1
e	Ad Hoc as required	Notify modifications to Meter Association/De-association	SW	CMA	Meter Id	T023.0/T024.0 as relevant
f	1 BD of e	Load to Central Systems, notify LP	CMA	SS LP		T023.1/T024.1 as relevant
		If meter has been removed go to CSSD0104 Section 6 Removal of Meter from a Supply Point				

4.4 TE Calculations – Invoice Period

Step Ref:	When	Requirement	From	To	Information	Method
a	As required for Settlement	Obtain TE Actual Volume Discharged Value for DPID	CMA	Internal		
b		Calculate DPID Daily Actual Volume Discharged (DAVD)	CMA	Internal	Actual Volume Discharged Period for Actual Volume Discharge	
c		Calculate DPID TE Availability Charge and TE Operating Charge	CMA	Internal	CDV – Chargeable Daily Volume Ra – Reception Capacity Charge Va – Volumetric Capacity Charge Ba – Biological Capacity Charge sBODI – Chargeable Settled Biochemical Oxygen Demand load Sa – Sludge Capacity Charge	

Step Ref:	When	Requirement	From	To	Information	Method
					Daily Actual Volume Discharged Ro – Reception Operating Charge Vo – Volumetric Operating Charge Bo – Biological Operating Charge Ot – Fixed Strength Chemical Oxygen Demand Os – Standard Strength Chemical Oxygen Demand So – Sludge Operating Charge St – Fixed Strength Solids Ss – Standard Strength Solids Demand	
D		Calculate DPID Daily Charge	CMA	Internal	Daily Availability Charge Daily Operating Charge	
e		Calculate Invoice Period TE Charge for DPs and LPs	CMA	Internal	Daily Charges for each day in the Invoice Period.	
		Go to CSD0201 Settlement Reporting				

4.5 TE Calculations – Tariff Year Settlement Run

Step Ref:	When	Requirement	From	To	Information	Method
a	For RF Settlement Run	Obtain TE Actual Volume Discharged Value for DPID	CMA	Internal		
b		Calculate DPID Daily Actual Volume Discharged (DAVD)	CMA	Internal	Actual Volume Discharged Period for Actual Volume Discharge	
c		Calculate DPID TE Availability Charge and TE Operating Charge	CMA	Internal	CDV – Chargeable Daily Volume Ra – Reception Capacity Charge Va – Volumetric Capacity Charge Ba – Biological Capacity Charge sBODI – Chargeable Settled Biochemical Oxygen Demand load Sa – Sludge Capacity Charge	

Step Ref:	When	Requirement	From	To	Information	Method
					Daily Actual Volume Discharged Ro – Reception Operating Charge Vo – Volumetric Operating Charge Bo – Biological Operating Charge Ot – Fixed Strength Chemical Oxygen Demand Os – Standard Strength Chemical Oxygen Demand So – Sludge Operating Charge St – Fixed Strength Solids Ss – Standard Strength Solids Demand	
d		Calculate DPID Daily Charge	CMA	Internal	Daily Availability Charge Daily Operating Charge	
e		Calculate Year TE Charge (YTEC) for each DPID and LPs	CMA	Internal	Daily Charges for each day in the Invoice Period.	
f		If YTEC less than minimum charge go to step g. Else goto CSD0201 Settlement Reporting	CMA	Internal	Minimum charge for DP Year TE Charge for DP	
g		Calculate YTEC for based upon minimum charge	CMA	Internal	As above	

Step Ref:	When	Requirement	From	To	Information	Method
		Go to CSD0201 Settlement Reporting				

Appendix 1 –Schedule 3 Agreements for Trade Effluent

Schedule 3 Agreements

The CMA will be notified of all Discharge Points affected by a Schedule 3 Agreement as part of the dataset provided by Scottish Water or Scottish Water Business Stream, as appropriate, in accordance with their Transitional Duties under (Schedule 5 of the Market Code). For all Discharge Points affected by a Schedule 3 Agreement, the Commission will arrange for the percentage discount to be applied to the calculation of Wholesale Charges for each Discharge Point and, an effective from date (EFD), which will be notified to the CMA in a format to be agreed with the CMA.

The date of termination of the Schedule 3 Agreement at a Supply Point shall be notified by Scottish Water. Where the initial notification was in error, notification of revision will be provided in accordance with CSD0105 (Error Rectification and Retrospective Amendments)

The CMA will apply the following process in respect of Supply Points at premises affected by a Schedule 3 Agreement until the end date advised, unless otherwise notified.

The percentage discount will be applied to the Daily Trade Effluent Charge (DTEC) prior to charge allocation to the Licensed Provider Registered for that Discharge Point on that Settlement Day and aggregation for Invoice Period settlement reporting.

As a result the following formula will be used:

$$DTEC_{S3} = DTEC * (1 - P_{S3})$$

Where:

$DTEC_{S3}$ is the Daily Trade Effluent Charge associated for the Schedule 3 [percentage] discount for the Discharge Point;

DTEC is the Daily Trade Effluent Charge as calculated for the Discharge Point being discounted; and

P_{S3} is the percentage discount to be applied following the Commission's determination under paragraph 2 of schedule 3 to the Act in relation to that Schedule 3 Agreement.