



Market Code Schedule 14
Code Subsidiary Document No.
0201

Settlement Timetable & Reporting

Version: 1.1

Status: Final

Date: 31/08/2007

Reference No: CSD0201

Change History

Version Number	Status	Date of Issue	Reason For Change	Change Control Reference
1.0	Final	14/05/08	N/A	
1.1	Final	31/08/07		

Quality Assurance

Name	Responsibility	Signature	Date
Author:			
Alec Thompson			
Reviewer(s):			
Ken McRae			
Dan Lomax			
Jill Ashby			
Approved:			
Authorised:			

Table of Contents

1.	Purpose and Scope	4
2.	Settlement Timetable and Reporting Description	5
2.1	Provision of the Settlement Timetable for each Year	5
2.2	Provision of the Scottish Water Data	5
2.3	Estimated Weighted Average (EWA) Unit Rate Production	5
2.4	Settlement Run Types	5
2.5	Settlement Report Content	7
3.	Process Diagrams	9
4.	Interface and Timetable Requirements	10
	Appendix 1 – Example Settlement Timetable	11

1. Purpose and Scope

This document describes how the CMA will produce the Settlement Timetable and describes the content of the Settlement Reports that the CMA will produce in any Year.

2. Settlement Timetable and Reporting Description

2.1 Provision of the Settlement Timetable for each Year

The CMA will provide a Settlement Timetable to all Trading Parties and Scottish Water 30 Business Days prior to the first Settlement Run (P1) of each Year. This timetable will detail the calendar dates on which the CMA will issue the Settlement Reports to Trading Parties in any Year. The various Settlements Reports that the CMA will produce are described as P1, R1, R2, R3 and RF (which is further explained later in this document).

Appendix 1 contains an example Settlement Timetable for the Year 01/04/2008 to 31/03/2009.

2.2 Provision of the Scottish Water Data

Scottish Water will provide the CMA with the Scottish Water Data at least 20 Business Days prior to the first Settlement Run (P1) of any Year.

The CMA will make available the Scottish Water Data in order that all market participants can satisfy themselves as to its accuracy.

2.3 Estimated Weighted Average (EWA) Unit Rate Production

The CMA will produce the Estimated Weighted Average Unit Rate for each Supply Point, in accordance with CSD0205 (Charge Calculation, Allocation and Aggregation), 10 Business Days prior to the first Settlement Run (P1) of any Year.

2.4 Settlement Run Types

The CMA will calculate the relevant Wholesale Charges payable by each Licensed Provider in respect of each Settlement Day by performing the Settlement Runs. The CMA will perform four Settlement Runs for each Settlement Day: P1, R1, R2 and R3 and will perform the Tariff Year Settlement Run (RF) once for each Year. The CMA will report each of these Settlement Runs as follows:

- P1 – the preliminary Settlement Run(s), the Settlement Reports for which will be issued 16 Business Days before the Invoice Period in which the Settlement Day falls;
- R1 – the first Settlement Run(s), the Settlement Reports for which will be issued 2 Business Days after the end of the Invoice Period in which the Settlement Day falls;

- R2 – the second Settlement Run(s), the Settlement Reports for which will be issued 2 months after the end of the Invoice Period in which the Settlement Day falls;
- R3 – the third Settlement Run(s), the Settlement Reports for which will be issued 8 months after the end of the Invoice Period in which the Settlement Day falls; and
- RF – the, Tariff Year Settlement Run, the Settlement Reports for which will be issued 5 BD after the last third Settlement Run (R3) is reported for any Year.

2.4.1 Settlement Day Based Settlement Runs (P1, R1, R2 and R3)

The CMA will capture any changes to the Registration and Volume data of a Supply Point in each Settlement Run (P1, R1, R2 and R3) for a given Settlement Day. The report data generated by the CMA in respect of each Supply Point through each Settlement Run will therefore become progressively more accurate.

In Settlement Run P1, the CMA will calculate a forecast of the Wholesale Charges that will be payable by each Licensed Provider in respect of each Supply Point registered to it on the relevant Settlement Day.

The CMA's calculations during R1 Settlement Runs will factor in all data submitted to it relating to any changes to a Supply Point's SPID Data and/or Trading Data during the relevant Invoice Period.

The CMA's calculations during R2 Settlement Runs will factor in all new SPID Data and Trading Data submitted to it since Settlement Run R1 (particularly Meter Reads that are performed on a monthly basis).

The CMA's calculations during R3 Settlement Runs will factor in all new SPID Data and Trading Data submitted to it since Settlement Run R2 (particularly Meter Reads that are performed on a bi-annual basis).

The Estimated Weighted Average Unit Rate calculated for the Year will be applied to volumetric charges throughout these Settlement Runs.

The CMA may perform further ad hoc settlement runs, as required in accordance with the Market Code.

2.4.2 Tariff Year Settlement Run (RF)

The CMA will perform the RF Settlement Run 5 BD after reporting of the last R3 Settlement Run for any Year. The CMA's calculations during this Settlement Run will factor in the Actual Weighted Average Unit Rate for each Supply Point to calculate the Wholesale Charges that should have been payable by each Licensed Provider over the relevant Year for volumetric charges. Further detail on this process is provided in CSD0205 (Charge Calculation, Allocation and Aggregation).

2.5 Settlement Report Content

A Settlement Report will provide aggregated Settlement Day charges payable in respective each Invoice Period. Each Settlement Report will contain the following information:

- The Volume supplied by the Licensed Provider for each of the different volumetric Service Elements which it provided during the relevant Invoice Period;
- The volumetric charges payable by the Licensed Provider for each of the different volumetric Service Elements which it provided during the relevant Invoice Period;
- The total number of Settlement Days Registered for each of the different non-volumetric Service Elements which it provided during the relevant Invoice Period;
- The non-volumetric charges payable by the Licensed Provider for each of the different non-volumetric Service Elements which it provided during the relevant Invoice Period;
- The Volume supplied by the Licensed Provider for Trade Effluent Service to a Discharge Point which it provided during the relevant Invoice Period;
- The total number of Settlement Days Registered for Trade Effluent Service to a Discharge Point which it provided during the relevant Invoice Period; and
- The Trade Effluent Charge payable by the Licensed Provider for Trade Effluent Service to a Discharge Point which it provided during the relevant Invoice Period;

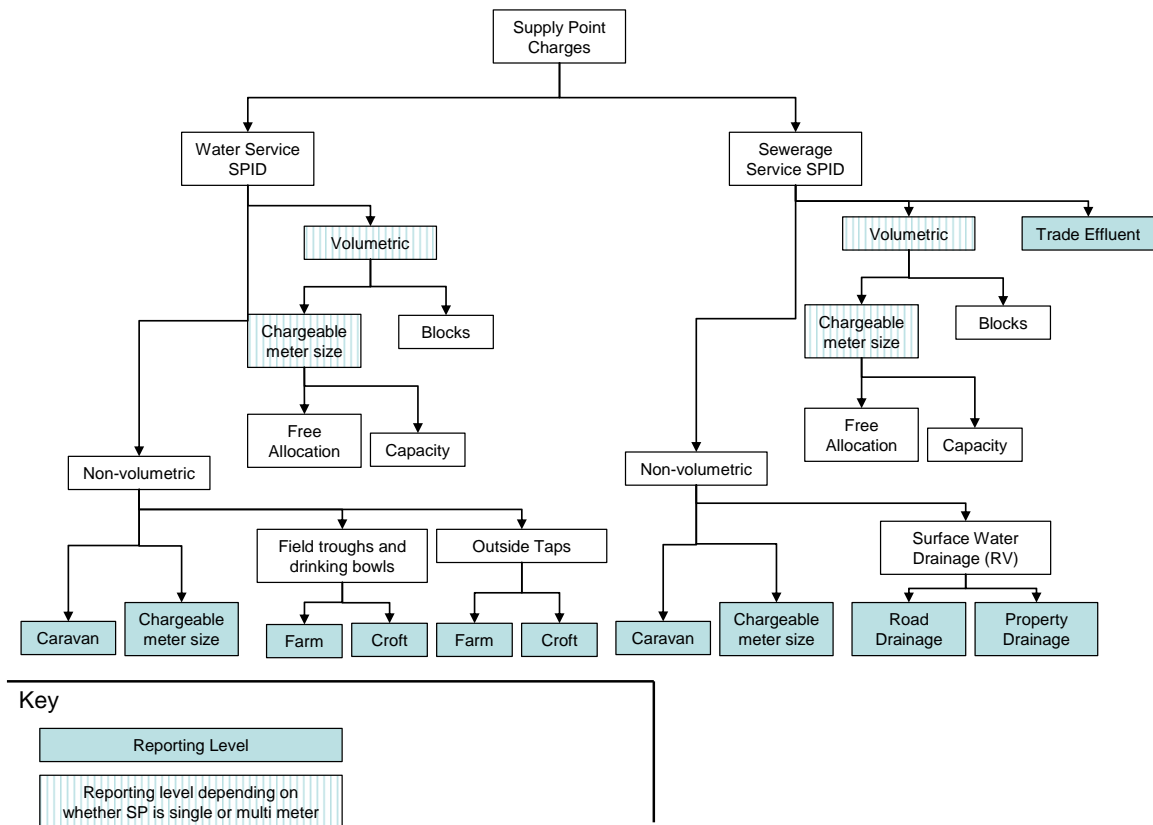


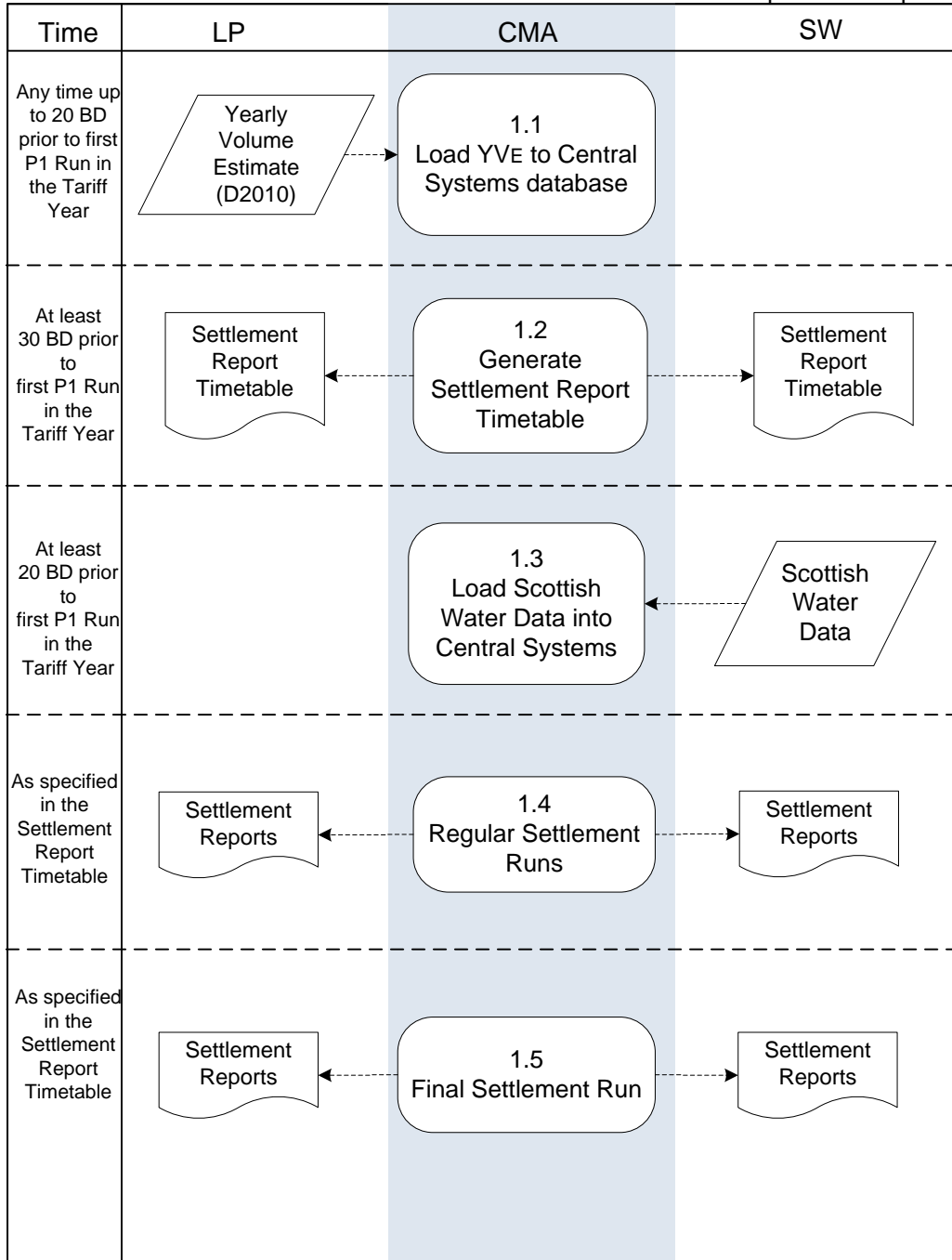
Figure 1. Service Element Charge breakdown structure.

Figure 1 illustrates the various Service Elements in relation to which the CMA will show the Wholesale Charges payable by each Licensed Provider in the Settlement Reports.

3. Process Diagrams

Settlement Timetable

Updated 13 Apr 07



4. Interface and Timetable Requirements

Step Ref	When	Requirement	From	To	Information	Method
1.1	Any time up to 20 Business Days prior to Settlement Run P1 in the relevant Year	Licensed Provider may forecast the Estimated Yearly Volume	LP	CMA	The forecast of the Estimated Yearly Volume is part of the ad hoc SPID update process.	
1.2	At least 30 Business Days prior to Settlement Run P1 run for the relevant Year	Provide Settlement Reports Timetable to all Licensed Providers and SW	CMA	LPs; SW	Settlement Reports Timetable for all Settlement Reports to be provided in the forthcoming Year.	
1.3	At least 20 Business Days before Settlement Run P1 of the relevant Year	Scottish Water to provide the Scottish Water Data to the CMA for the relevant Year	SW	CMA	Scottish Water Data provided and made available to the Licensed Providers.	
1.4	As specified in the Settlement Reports Timetable.	Regular Settlement Runs. P1 – Preliminary R1 – Run 1 R2 – Run 2 R3 – Run 3	CMA	SW; LPs	Settlement Reports	
1.5	As specified in the Settlement Reports Timetable.	RF Settlement Run	CMA	SW, LPs	Settlement Reports	

Appendix 1 – Example Settlement Timetable

The following timetable has been created assuming the ongoing position, with the Financial Year running from 01/04/08 to 31/03/09 and Invoice Periods being calendar months.

Settlement Type	
P1	Preliminary Run (reported each Invoice Period, Monthly) 16 BD prior to the start of the month
R1	Run 1, reported monthly 2 BD after the end of the Invoice Month
R2	Run 2, reported monthly 2 months after Run 1 for the Invoice Month
R3	Run 3 reported monthly 6 months after Run 2 for the Invoice Month
RF	Final Run, Reported 5 Business Days after the last R3 Report for the Tariff Year (run once each Year)

date	day	Event / Settlement Report
01/01/2008	Tuesday	New Years Day
02/01/2008	Wednesday	2nd January
03/01/2008	Thursday	
04/01/2008	Friday	
05/01/2008	Saturday	
06/01/2008	Sunday	
07/01/2008	Monday	
08/01/2008	Tuesday	
09/01/2008	Wednesday	
10/01/2008	Thursday	
11/01/2008	Friday	
12/01/2008	Saturday	
13/01/2008	Sunday	
14/01/2008	Monday	
15/01/2008	Tuesday	
16/01/2008	Wednesday	
17/01/2008	Thursday	
18/01/2008	Friday	
19/01/2008	Saturday	
20/01/2008	Sunday	
21/01/2008	Monday	
22/01/2008	Tuesday	
23/01/2008	Wednesday	
24/01/2008	Thursday	
25/01/2008	Friday	
26/01/2008	Saturday	
27/01/2008	Sunday	

28/01/2008	Monday	CMA to issue Settlement Timetable Calendar for 2008/9 to SW and all Licensed Providers
29/01/2008	Tuesday	
30/01/2008	Wednesday	
31/01/2008	Thursday	
01/02/2008	Friday	
02/02/2008	Saturday	
03/02/2008	Sunday	
04/02/2008	Monday	
05/02/2008	Tuesday	
06/02/2008	Wednesday	
07/02/2008	Thursday	
08/02/2008	Friday	
09/02/2008	Saturday	
10/02/2008	Sunday	
11/02/2008	Monday	Scottish Water Data Applicable to the Year 2008/9 last day for delivery from SW to CMA
12/02/2008	Tuesday	
13/02/2008	Wednesday	
14/02/2008	Thursday	
15/02/2008	Friday	
16/02/2008	Saturday	
17/02/2008	Sunday	
18/02/2008	Monday	
19/02/2008	Tuesday	
20/02/2008	Wednesday	
21/02/2008	Thursday	
22/02/2008	Friday	
23/02/2008	Saturday	
24/02/2008	Sunday	
25/02/2008	Monday	CMA produce EWA Unit Rates for Supply Points for the Year ahead
26/02/2008	Tuesday	
27/02/2008	Wednesday	
28/02/2008	Thursday	
29/02/2008	Friday	
01/03/2008	Saturday	
02/03/2008	Sunday	
03/03/2008	Monday	
04/03/2008	Tuesday	
05/03/2008	Wednesday	
06/03/2008	Thursday	
07/03/2008	Friday	
08/03/2008	Saturday	
09/03/2008	Sunday	
10/03/2008	Monday	P1 run for April 2008 - 16 BD before start of the Invoice Period
11/03/2008	Tuesday	

12/03/2008	Wednesday	
13/03/2008	Thursday	
14/03/2008	Friday	
15/03/2008	Saturday	
16/03/2008	Sunday	
17/03/2008	Monday	
18/03/2008	Tuesday	
19/03/2008	Wednesday	
20/03/2008	Thursday	
21/03/2008	Friday	Good Friday
22/03/2008	Saturday	
23/03/2008	Sunday	
24/03/2008	Monday	Easter Monday
25/03/2008	Tuesday	
26/03/2008	Wednesday	
27/03/2008	Thursday	
28/03/2008	Friday	
29/03/2008	Saturday	
30/03/2008	Sunday	
31/03/2008	Monday	
01/04/2008	Tuesday	Start of Year 2008/9
02/04/2008	Wednesday	
03/04/2008	Thursday	
04/04/2008	Friday	
05/04/2008	Saturday	
06/04/2008	Sunday	
07/04/2008	Monday	
08/04/2008	Tuesday	
09/04/2008	Wednesday	P1 run for May 2008 - 16 BD before start of the Invoice Period
10/04/2008	Thursday	
11/04/2008	Friday	
12/04/2008	Saturday	
13/04/2008	Sunday	
14/04/2008	Monday	
15/04/2008	Tuesday	
16/04/2008	Wednesday	
17/04/2008	Thursday	
18/04/2008	Friday	
19/04/2008	Saturday	
20/04/2008	Sunday	
21/04/2008	Monday	
22/04/2008	Tuesday	
23/04/2008	Wednesday	
24/04/2008	Thursday	
25/04/2008	Friday	
26/04/2008	Saturday	
27/04/2008	Sunday	
28/04/2008	Monday	

29/04/2008	Tuesday	
30/04/2008	Wednesday	
01/05/2008	Thursday	
02/05/2008	Friday	R1 run for April 2008 - 2 BD after end of the Invoice Period
03/05/2008	Saturday	
04/05/2008	Sunday	
05/05/2008	Monday	Early May Bank Holiday
06/05/2008	Tuesday	
07/05/2008	Wednesday	
08/05/2008	Thursday	P1 run for June 2008 - 16 BD before start of the Invoice Period
09/05/2008	Friday	
10/05/2008	Saturday	
11/05/2008	Sunday	
12/05/2008	Monday	
13/05/2008	Tuesday	
14/05/2008	Wednesday	
15/05/2008	Thursday	
16/05/2008	Friday	
17/05/2008	Saturday	
18/05/2008	Sunday	
19/05/2008	Monday	
20/05/2008	Tuesday	
21/05/2008	Wednesday	
22/05/2008	Thursday	
23/05/2008	Friday	
24/05/2008	Saturday	
25/05/2008	Sunday	
26/05/2008	Monday	Spring Bank Holiday
27/05/2008	Tuesday	
28/05/2008	Wednesday	
29/05/2008	Thursday	
30/05/2008	Friday	
31/05/2008	Saturday	
01/06/2008	Sunday	
02/06/2008	Monday	
03/06/2008	Tuesday	R1 run for May 2008 - 2 BD after end of the Invoice Period
04/06/2008	Wednesday	
05/06/2008	Thursday	
06/06/2008	Friday	
07/06/2008	Saturday	
08/06/2008	Sunday	
09/06/2008	Monday	P1 run for July 2008 - 16 BD before start of the Invoice Period
10/06/2008	Tuesday	
11/06/2008	Wednesday	
12/06/2008	Thursday	

13/06/2008	Friday	
14/06/2008	Saturday	
15/06/2008	Sunday	
16/06/2008	Monday	
17/06/2008	Tuesday	
18/06/2008	Wednesday	
19/06/2008	Thursday	
20/06/2008	Friday	
21/06/2008	Saturday	
22/06/2008	Sunday	
23/06/2008	Monday	
24/06/2008	Tuesday	
25/06/2008	Wednesday	
26/06/2008	Thursday	
27/06/2008	Friday	
28/06/2008	Saturday	
29/06/2008	Sunday	
30/06/2008	Monday	
01/07/2008	Tuesday	
02/07/2008	Wednesday	R1 run for June 2008 - 2 BD after end of the Invoice Period
		R2 run for April 2008 - 2 Months after R1
03/07/2008	Thursday	
04/07/2008	Friday	
05/07/2008	Saturday	
06/07/2008	Sunday	
07/07/2008	Monday	
08/07/2008	Tuesday	
09/07/2008	Wednesday	
10/07/2008	Thursday	P1 run for August 2008 - 16 BD before start of the Invoice Period
11/07/2008	Friday	
12/07/2008	Saturday	
13/07/2008	Sunday	
14/07/2008	Monday	
15/07/2008	Tuesday	
16/07/2008	Wednesday	
17/07/2008	Thursday	
18/07/2008	Friday	
19/07/2008	Saturday	
20/07/2008	Sunday	
21/07/2008	Monday	
22/07/2008	Tuesday	
23/07/2008	Wednesday	
24/07/2008	Thursday	
25/07/2008	Friday	
26/07/2008	Saturday	
27/07/2008	Sunday	
28/07/2008	Monday	

29/07/2008	Tuesday	
30/07/2008	Wednesday	
31/07/2008	Thursday	
01/08/2008	Friday	
02/08/2008	Saturday	
03/08/2008	Sunday	
04/08/2008	Monday	Summer Bank Holiday
05/08/2008	Tuesday	R1 run for July 2008 - 2 BD after end of the Invoice Period
06/08/2008	Wednesday	R2 run for May 2008 - 2 Months after R1
07/08/2008	Thursday	
08/08/2008	Friday	P1 run for September 2008 - 16 BD before start of the Invoice Period
09/08/2008	Saturday	
10/08/2008	Sunday	
11/08/2008	Monday	
12/08/2008	Tuesday	
13/08/2008	Wednesday	
14/08/2008	Thursday	
15/08/2008	Friday	
16/08/2008	Saturday	
17/08/2008	Sunday	
18/08/2008	Monday	
19/08/2008	Tuesday	
20/08/2008	Wednesday	
21/08/2008	Thursday	
22/08/2008	Friday	
23/08/2008	Saturday	
24/08/2008	Sunday	
25/08/2008	Monday	
26/08/2008	Tuesday	
27/08/2008	Wednesday	
28/08/2008	Thursday	
29/08/2008	Friday	
30/08/2008	Saturday	
31/08/2008	Sunday	
01/09/2008	Monday	
02/09/2008	Tuesday	R1 run for August 2008 - 2 BD after end of the Invoice Period
		R2 run for June 2008 - 2 Months after R1
03/09/2008	Wednesday	
04/09/2008	Thursday	
05/09/2008	Friday	
06/09/2008	Saturday	
07/09/2008	Sunday	
08/09/2008	Monday	
09/09/2008	Tuesday	P1 run for October 2008 - 16 BD before start of the Invoice Period
10/09/2008	Wednesday	

11/09/2008	Thursday	
12/09/2008	Friday	
13/09/2008	Saturday	
14/09/2008	Sunday	
15/09/2008	Monday	
16/09/2008	Tuesday	
17/09/2008	Wednesday	
18/09/2008	Thursday	
19/09/2008	Friday	
20/09/2008	Saturday	
21/09/2008	Sunday	
22/09/2008	Monday	
23/09/2008	Tuesday	
24/09/2008	Wednesday	
25/09/2008	Thursday	
26/09/2008	Friday	
27/09/2008	Saturday	
28/09/2008	Sunday	
29/09/2008	Monday	
30/09/2008	Tuesday	
01/10/2008	Wednesday	
02/10/2008	Thursday	R1 run for September 2008 - 2 BD after end of the Invoice Period
03/10/2008	Friday	
04/10/2008	Saturday	
05/10/2008	Sunday	
06/10/2008	Monday	R2 run for July 2008 - 2 Months after R1
07/10/2008	Tuesday	
08/10/2008	Wednesday	
09/10/2008	Thursday	
10/10/2008	Friday	P1 run for November 2008 - 16 BD before start of the Invoice Period
11/10/2008	Saturday	
12/10/2008	Sunday	
13/10/2008	Monday	
14/10/2008	Tuesday	
15/10/2008	Wednesday	
16/10/2008	Thursday	
17/10/2008	Friday	
18/10/2008	Saturday	
19/10/2008	Sunday	
20/10/2008	Monday	
21/10/2008	Tuesday	
22/10/2008	Wednesday	
23/10/2008	Thursday	
24/10/2008	Friday	
25/10/2008	Saturday	
26/10/2008	Sunday	
27/10/2008	Monday	

28/10/2008	Tuesday	
29/10/2008	Wednesday	
30/10/2008	Thursday	
31/10/2008	Friday	
01/11/2008	Saturday	
02/11/2008	Sunday	
03/11/2008	Monday	
04/11/2008	Tuesday	R1 run for October 2008 - 2 BD after end of the Invoice Period
05/11/2008	Wednesday	R2 run for August 2008 - 2 Months after R1
06/11/2008	Thursday	
07/11/2008	Friday	P1 run for December 2008 - 16 BD before start of the Invoice Period
08/11/2008	Saturday	
09/11/2008	Sunday	
10/11/2008	Monday	
11/11/2008	Tuesday	
12/11/2008	Wednesday	
13/11/2008	Thursday	
14/11/2008	Friday	
15/11/2008	Saturday	
16/11/2008	Sunday	
17/11/2008	Monday	
18/11/2008	Tuesday	
19/11/2008	Wednesday	
20/11/2008	Thursday	
21/11/2008	Friday	
22/11/2008	Saturday	
23/11/2008	Sunday	
24/11/2008	Monday	
25/11/2008	Tuesday	
26/11/2008	Wednesday	
27/11/2008	Thursday	
28/11/2008	Friday	
29/11/2008	Saturday	
30/11/2008	Sunday	
01/12/2008	Monday	
02/12/2008	Tuesday	R1 run for November 2008 - 2 BD after end of the Invoice Period
		R2 run for September 2008 - 2 Months after R1
03/12/2008	Wednesday	
04/12/2008	Thursday	
05/12/2008	Friday	
06/12/2008	Saturday	
07/12/2008	Sunday	
08/12/2008	Monday	P1 run for January 2009 - 16 BD before start of the Invoice Period

09/12/2008	Tuesday	
10/12/2008	Wednesday	
11/12/2008	Thursday	
12/12/2008	Friday	
13/12/2008	Saturday	
14/12/2008	Sunday	
15/12/2008	Monday	
16/12/2008	Tuesday	
17/12/2008	Wednesday	
18/12/2008	Thursday	
19/12/2008	Friday	
20/12/2008	Saturday	
21/12/2008	Sunday	
22/12/2008	Monday	
23/12/2008	Tuesday	
24/12/2008	Wednesday	
25/12/2008	Thursday	Christmas Day
26/12/2008	Friday	Boxing Day
27/12/2008	Saturday	
28/12/2008	Sunday	
29/12/2008	Monday	
30/12/2008	Tuesday	
31/12/2008	Wednesday	
01/01/2009	Thursday	New Years Day
02/01/2009	Friday	2nd January
03/01/2009	Saturday	
04/01/2009	Sunday	
05/01/2009	Monday	R3 run for April 2008 - 6 Months after R2
06/01/2009	Tuesday	R1 run for December 2008 - 2 BD after end of the Invoice Period
07/01/2009	Wednesday	R2 run for October 2008 - 2 Months after R1
08/01/2009	Thursday	
09/01/2009	Friday	P1 run for February 2009 - 16 BD before start of the Invoice Period
10/01/2009	Saturday	
11/01/2009	Sunday	
12/01/2009	Monday	
13/01/2009	Tuesday	
14/01/2009	Wednesday	
15/01/2009	Thursday	
16/01/2009	Friday	
17/01/2009	Saturday	
18/01/2009	Sunday	
19/01/2009	Monday	
20/01/2009	Tuesday	
21/01/2009	Wednesday	
22/01/2009	Thursday	
23/01/2009	Friday	
24/01/2009	Saturday	

25/01/2009	Sunday	
26/01/2009	Monday	
27/01/2009	Tuesday	CMA to issue Settlement Timetable Calendar for 2009/10 to SW and all Licensed Providers
28/01/2009	Wednesday	
29/01/2009	Thursday	
30/01/2009	Friday	
31/01/2009	Saturday	
01/02/2009	Sunday	
02/02/2009	Monday	R2 run for November 2008 - 2 Months after R1
03/02/2009	Tuesday	R1 run for January 2009 - 2 BD after end of the Invoice Period
04/02/2009	Wednesday	
05/02/2009	Thursday	
06/02/2009	Friday	R3 run for May 2008 - 6 Months after R2
		P1 run for March 2009 - 16 BD before start of the Invoice Period
07/02/2009	Saturday	
08/02/2009	Sunday	
09/02/2009	Monday	
10/02/2009	Tuesday	Scottish Water Data Applicable to Tariff Year 2009/10 last day for delivery from SW to CMA
		EWA run for Tariff Year 01/04/2009 - 31/03/2010
11/02/2009	Wednesday	
12/02/2009	Thursday	
13/02/2009	Friday	
14/02/2009	Saturday	
15/02/2009	Sunday	
16/02/2009	Monday	
17/02/2009	Tuesday	
18/02/2009	Wednesday	
19/02/2009	Thursday	
20/02/2009	Friday	
21/02/2009	Saturday	
22/02/2009	Sunday	
23/02/2009	Monday	
24/02/2009	Tuesday	
25/02/2009	Wednesday	
26/02/2009	Thursday	
27/02/2009	Friday	
28/02/2009	Saturday	
01/03/2009	Sunday	
02/03/2009	Monday	R3 run for June 2008 - 6 Months after R2
03/03/2009	Tuesday	R1 run for February 2009 - 2 BD after end of the Invoice Period
04/03/2009	Wednesday	

05/03/2009	Thursday	
06/03/2009	Friday	R2 run for December 2008 - 2 Months after R1
07/03/2009	Saturday	
08/03/2009	Sunday	
09/03/2009	Monday	
10/03/2009	Tuesday	P1 run for April 2009 - 16 BD before start of the Invoice Period
11/03/2009	Wednesday	
12/03/2009	Thursday	
13/03/2009	Friday	
14/03/2009	Saturday	
15/03/2009	Sunday	
16/03/2009	Monday	
17/03/2009	Tuesday	
18/03/2009	Wednesday	
19/03/2009	Thursday	
20/03/2009	Friday	
21/03/2009	Saturday	
22/03/2009	Sunday	
23/03/2009	Monday	
24/03/2009	Tuesday	
25/03/2009	Wednesday	
26/03/2009	Thursday	
27/03/2009	Friday	
28/03/2009	Saturday	
29/03/2009	Sunday	
30/03/2009	Monday	
31/03/2009	Tuesday	
01/04/2009	Wednesday	
02/04/2009	Thursday	R1 run for March 2009 - 2 BD after end of the Invoice Period
03/04/2009	Friday	R2 run for January 2009 - 2 Months after R1
04/04/2009	Saturday	
05/04/2009	Sunday	
06/04/2009	Monday	R3 run for July 2008 - 6 Months after R2
07/04/2009	Tuesday	
08/04/2009	Wednesday	P1 run for May 2009 - 16 BD before start of the Invoice Period
09/04/2009	Thursday	
10/04/2009	Friday	Good Friday
11/04/2009	Saturday	
12/04/2009	Sunday	
13/04/2009	Monday	Easter Monday
14/04/2009	Tuesday	
15/04/2009	Wednesday	
16/04/2009	Thursday	
17/04/2009	Friday	
18/04/2009	Saturday	

19/04/2009	Sunday	
20/04/2009	Monday	
21/04/2009	Tuesday	
22/04/2009	Wednesday	
23/04/2009	Thursday	
24/04/2009	Friday	
25/04/2009	Saturday	
26/04/2009	Sunday	
27/04/2009	Monday	
28/04/2009	Tuesday	
29/04/2009	Wednesday	
30/04/2009	Thursday	
01/05/2009	Friday	
02/05/2009	Saturday	
03/05/2009	Sunday	
04/05/2009	Monday	Early May Bank Holiday
05/05/2009	Tuesday	R3 run for August 2008 - 6 Months after R2
		R1 run for April 2009 - 2 BD after end of the Invoice Period
		R2 run for February 2009 - 2 Months after R1
06/05/2009	Wednesday	
07/05/2009	Thursday	P1 run for June 2009 - 16 BD before start of the Invoice Period
08/05/2009	Friday	
09/05/2009	Saturday	
10/05/2009	Sunday	
11/05/2009	Monday	
12/05/2009	Tuesday	
13/05/2009	Wednesday	
14/05/2009	Thursday	
15/05/2009	Friday	
16/05/2009	Saturday	
17/05/2009	Sunday	
18/05/2009	Monday	
19/05/2009	Tuesday	
20/05/2009	Wednesday	
21/05/2009	Thursday	
22/05/2009	Friday	
23/05/2009	Saturday	
24/05/2009	Sunday	
25/05/2009	Monday	Spring Bank Holiday
26/05/2009	Tuesday	
27/05/2009	Wednesday	
28/05/2009	Thursday	
29/05/2009	Friday	
30/05/2009	Saturday	
31/05/2009	Sunday	
01/06/2009	Monday	
02/06/2009	Tuesday	R3 run for September 2008 - 6 Months after

		R2
		R1 run for May 2009 - 2 BD after end of the Invoice Period
		R2 run for March 2009 - 2 Months after R1
03/06/2009	Wednesday	
04/06/2009	Thursday	
05/06/2009	Friday	
06/06/2009	Saturday	
07/06/2009	Sunday	
08/06/2009	Monday	
09/06/2009	Tuesday	P1 run for July 2009 - 16 BD before start of the Invoice Period
10/06/2009	Wednesday	
11/06/2009	Thursday	
12/06/2009	Friday	
13/06/2009	Saturday	
14/06/2009	Sunday	
15/06/2009	Monday	
16/06/2009	Tuesday	
17/06/2009	Wednesday	
18/06/2009	Thursday	
19/06/2009	Friday	
20/06/2009	Saturday	
21/06/2009	Sunday	
22/06/2009	Monday	
23/06/2009	Tuesday	
24/06/2009	Wednesday	
25/06/2009	Thursday	
26/06/2009	Friday	
27/06/2009	Saturday	
28/06/2009	Sunday	
29/06/2009	Monday	
30/06/2009	Tuesday	
01/07/2009	Wednesday	
02/07/2009	Thursday	R1 run for June 2009 - 2 BD after end of the Invoice Period
03/07/2009	Friday	
04/07/2009	Saturday	
05/07/2009	Sunday	
06/07/2009	Monday	R2 run for April 2009 - 2 Months after R1
07/07/2009	Tuesday	R3 run for October 2008 - 6 Months after R2
08/07/2009	Wednesday	
09/07/2009	Thursday	
10/07/2009	Friday	P1 run for August 2009 - 16 BD before start of the Invoice Period
11/07/2009	Saturday	
12/07/2009	Sunday	
13/07/2009	Monday	
14/07/2009	Tuesday	

15/07/2009	Wednesday	
16/07/2009	Thursday	
17/07/2009	Friday	
18/07/2009	Saturday	
19/07/2009	Sunday	
20/07/2009	Monday	
21/07/2009	Tuesday	
22/07/2009	Wednesday	
23/07/2009	Thursday	
24/07/2009	Friday	
25/07/2009	Saturday	
26/07/2009	Sunday	
27/07/2009	Monday	
28/07/2009	Tuesday	
29/07/2009	Wednesday	
30/07/2009	Thursday	
31/07/2009	Friday	
01/08/2009	Saturday	
02/08/2009	Sunday	
03/08/2009	Monday	Summer Bank Holiday
04/08/2009	Tuesday	R3 run for November 2008 - 6 Months after R2
		R2 run for May 2009 - 2 Months after R1
05/08/2009	Wednesday	R1 run for July 2009 - 2 BD after end of the Invoice Period
06/08/2009	Thursday	
07/08/2009	Friday	
08/08/2009	Saturday	
09/08/2009	Sunday	
10/08/2009	Monday	P1 run for September 2009 - 16 BD before start of the Invoice Period
11/08/2009	Tuesday	
12/08/2009	Wednesday	
13/08/2009	Thursday	
14/08/2009	Friday	
15/08/2009	Saturday	
16/08/2009	Sunday	
17/08/2009	Monday	
18/08/2009	Tuesday	
19/08/2009	Wednesday	
20/08/2009	Thursday	
21/08/2009	Friday	
22/08/2009	Saturday	
23/08/2009	Sunday	
24/08/2009	Monday	
25/08/2009	Tuesday	
26/08/2009	Wednesday	
27/08/2009	Thursday	
28/08/2009	Friday	

29/08/2009	Saturday	
30/08/2009	Sunday	
31/08/2009	Monday	
01/09/2009	Tuesday	
02/09/2009	Wednesday	R1 run for August 2009 - 2 BD after end of the Invoice Period
		R2 run for June 2009 - 2 Months after R1
03/09/2009	Thursday	
04/09/2009	Friday	
05/09/2009	Saturday	
06/09/2009	Sunday	
07/09/2009	Monday	R3 run for December 2008 - 6 Months after R2
08/09/2009	Tuesday	
09/09/2009	Wednesday	P1 run for October 2009 - 16 BD before start of the Invoice Period
10/09/2009	Thursday	
11/09/2009	Friday	
12/09/2009	Saturday	
13/09/2009	Sunday	
14/09/2009	Monday	
15/09/2009	Tuesday	
16/09/2009	Wednesday	
17/09/2009	Thursday	
18/09/2009	Friday	
19/09/2009	Saturday	
20/09/2009	Sunday	
21/09/2009	Monday	
22/09/2009	Tuesday	
23/09/2009	Wednesday	
24/09/2009	Thursday	
25/09/2009	Friday	
26/09/2009	Saturday	
27/09/2009	Sunday	
28/09/2009	Monday	
29/09/2009	Tuesday	
30/09/2009	Wednesday	
01/10/2009	Thursday	
02/10/2009	Friday	R1 run for September 2009 - 2 BD after end of the Invoice Period
03/10/2009	Saturday	
04/10/2009	Sunday	
05/10/2009	Monday	R2 run for July 2009 - 2 Months after R1
06/10/2009	Tuesday	R3 run for January 2009 - 6 Months after R2
07/10/2009	Wednesday	
08/10/2009	Thursday	
09/10/2009	Friday	P1 run for November 2009 - 16 BD before start of the Invoice Period
10/10/2009	Saturday	

11/10/2009	Sunday	
12/10/2009	Monday	
13/10/2009	Tuesday	
14/10/2009	Wednesday	
15/10/2009	Thursday	
16/10/2009	Friday	
17/10/2009	Saturday	
18/10/2009	Sunday	
19/10/2009	Monday	
20/10/2009	Tuesday	
21/10/2009	Wednesday	
22/10/2009	Thursday	
23/10/2009	Friday	
24/10/2009	Saturday	
25/10/2009	Sunday	
26/10/2009	Monday	
27/10/2009	Tuesday	
28/10/2009	Wednesday	
29/10/2009	Thursday	
30/10/2009	Friday	
31/10/2009	Saturday	
01/11/2009	Sunday	
02/11/2009	Monday	R2 run for August 2009 - 2 Months after R1
03/11/2009	Tuesday	R1 run for October 2009 - 2 BD after end of the Invoice Period
04/11/2009	Wednesday	
05/11/2009	Thursday	R3 run for February 2009 - 6 Months after R2
06/11/2009	Friday	
07/11/2009	Saturday	
08/11/2009	Sunday	
09/11/2009	Monday	P1 run for December 2009 - 16 BD before start of the Invoice Period
10/11/2009	Tuesday	
11/11/2009	Wednesday	
12/11/2009	Thursday	
13/11/2009	Friday	
14/11/2009	Saturday	
15/11/2009	Sunday	
16/11/2009	Monday	
17/11/2009	Tuesday	
18/11/2009	Wednesday	
19/11/2009	Thursday	
20/11/2009	Friday	
21/11/2009	Saturday	
22/11/2009	Sunday	
23/11/2009	Monday	
24/11/2009	Tuesday	
25/11/2009	Wednesday	
26/11/2009	Thursday	

27/11/2009	Friday	
28/11/2009	Saturday	
29/11/2009	Sunday	
30/11/2009	Monday	
01/12/2009	Tuesday	
02/12/2009	Wednesday	R3 run for March 2009 - 6 Months after R2
		R2 run for September 2009 - 2 Months after R1
		R1 run for November 2009 - 2 BD after end of the Invoice Period
03/12/2009	Thursday	
04/12/2009	Friday	
05/12/2009	Saturday	
06/12/2009	Sunday	
07/12/2009	Monday	
08/12/2009	Tuesday	P1 run for January 2010 - 16 BD before start of the Invoice Period
09/12/2009	Wednesday	RF run for Tariff Year 01/04/2008 - 31/03/2009 Final Actual Settlement Run 8 months after end of Tariff Year
10/12/2009	Thursday	
11/12/2009	Friday	
12/12/2009	Saturday	
13/12/2009	Sunday	
14/12/2009	Monday	
15/12/2009	Tuesday	
16/12/2009	Wednesday	
17/12/2009	Thursday	
18/12/2009	Friday	
19/12/2009	Saturday	
20/12/2009	Sunday	
21/12/2009	Monday	
22/12/2009	Tuesday	
23/12/2009	Wednesday	
24/12/2009	Thursday	
25/12/2009	Friday	Christmas Day
26/12/2009	Saturday	
27/12/2009	Sunday	
28/12/2009	Monday	Boxing Day
29/12/2009	Tuesday	
30/12/2009	Wednesday	
31/12/2009	Thursday	